



# portland children's levy



**Community Council Meeting  
October 25<sup>th</sup>, 2024**



# Applicant Characteristics & Data Visualizations: Goals

- Leave with the skills to **understand and make meaning of data visualizations** summarizing applicant characteristics.
- **Prepare for January's** meeting, where you will discuss and recommend applicant characteristics that staff will use to shape two anonymous portfolios.



# Characteristics of Applications

## Amount of funds (dollars)

- Requested/available

## Number of applications

- Program area
- Organization type (grantee or new to PCL funding)
- Propose to serve focus population(s)
- Propose to address funding priorities

## Scores on applications

- Program area/funding requested



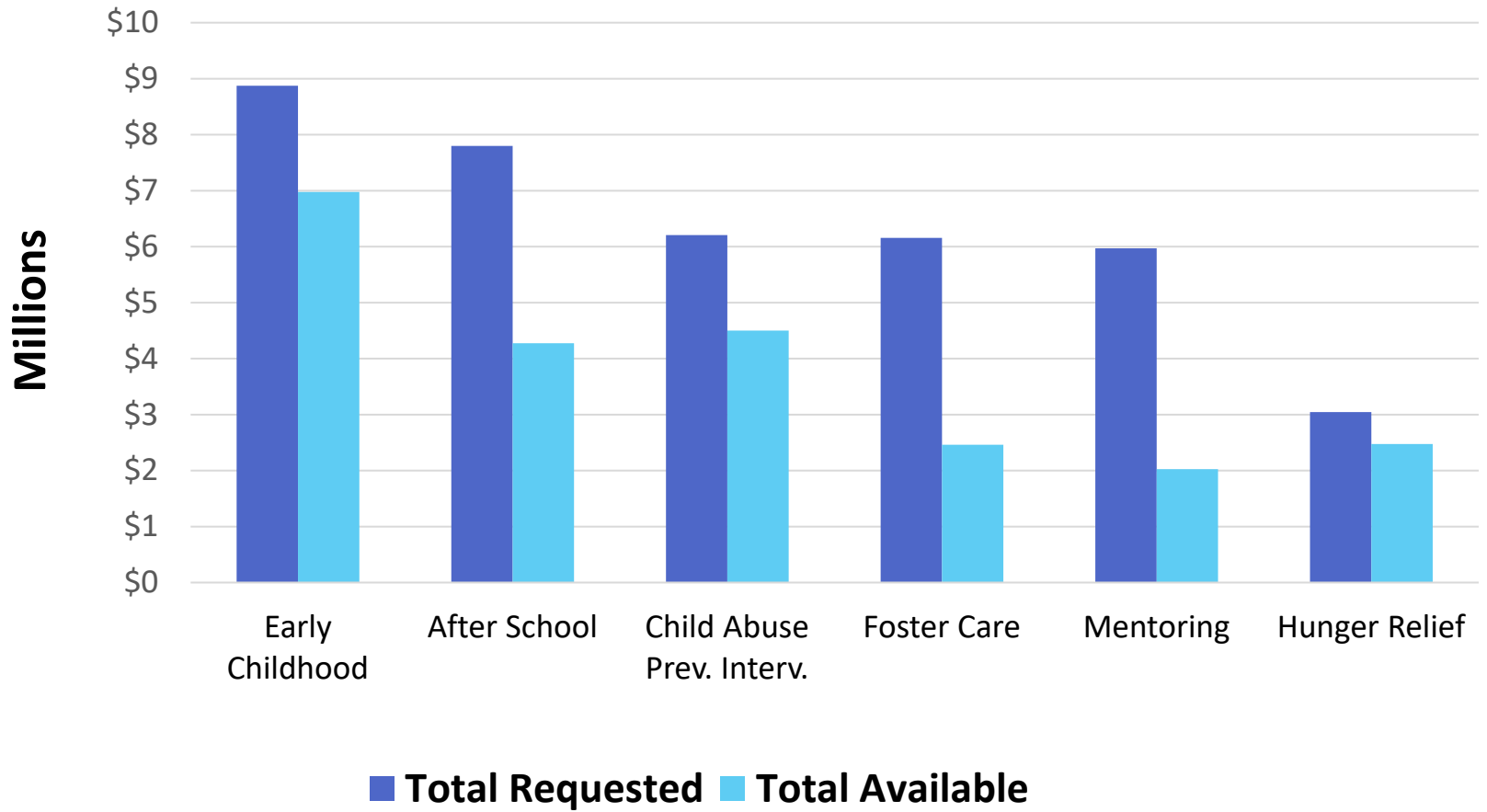
# Applicant Characteristics & Data Visualizations: Process

1. **Presentation – data visualization set**
  2. **Pair discussion**
    - What do you learn looking at the graphics?
    - What don't these graphics tell you?
    - What confusions do you have about the graphics?
  3. **Full group discussion**
- \*Repeat all steps 4 times\***



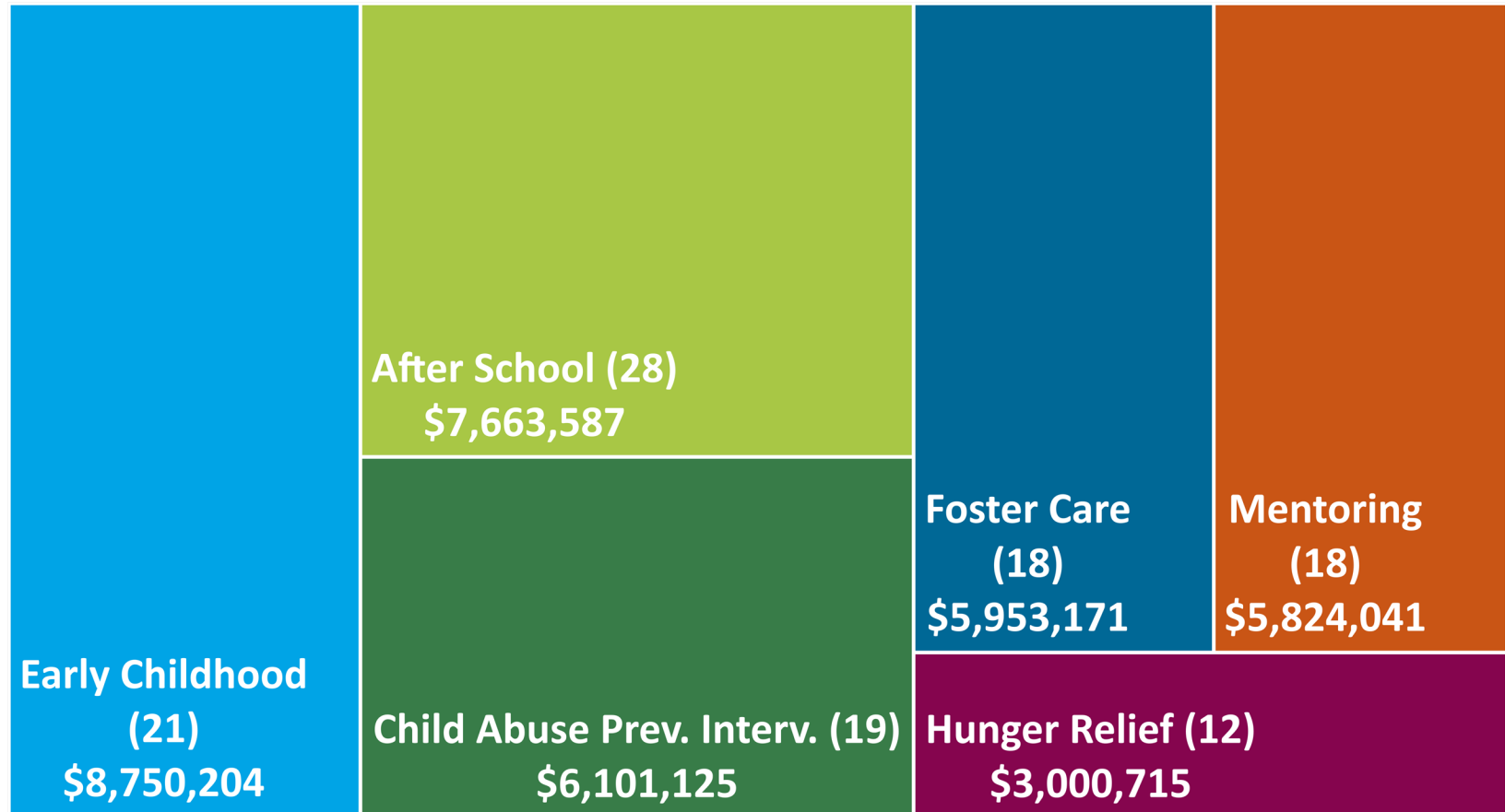
# Dollars: program areas

Amount of annual funding in millions of dollars: requested compared to available

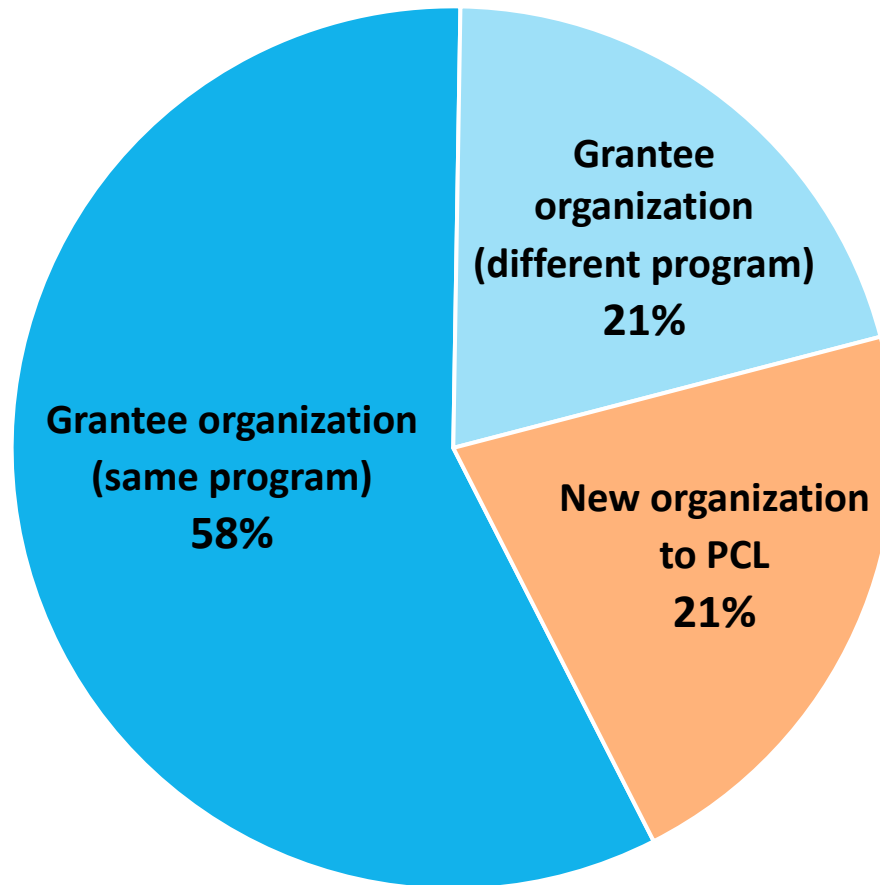




# Applications: program areas, \$ requested



# Applications: organization type



Total Applications= 116

Applications from **grantee organizations** (same program)=67

Applications from **grantee organizations** (different program)= 24

Applications from **new organizations** to PCL= 25



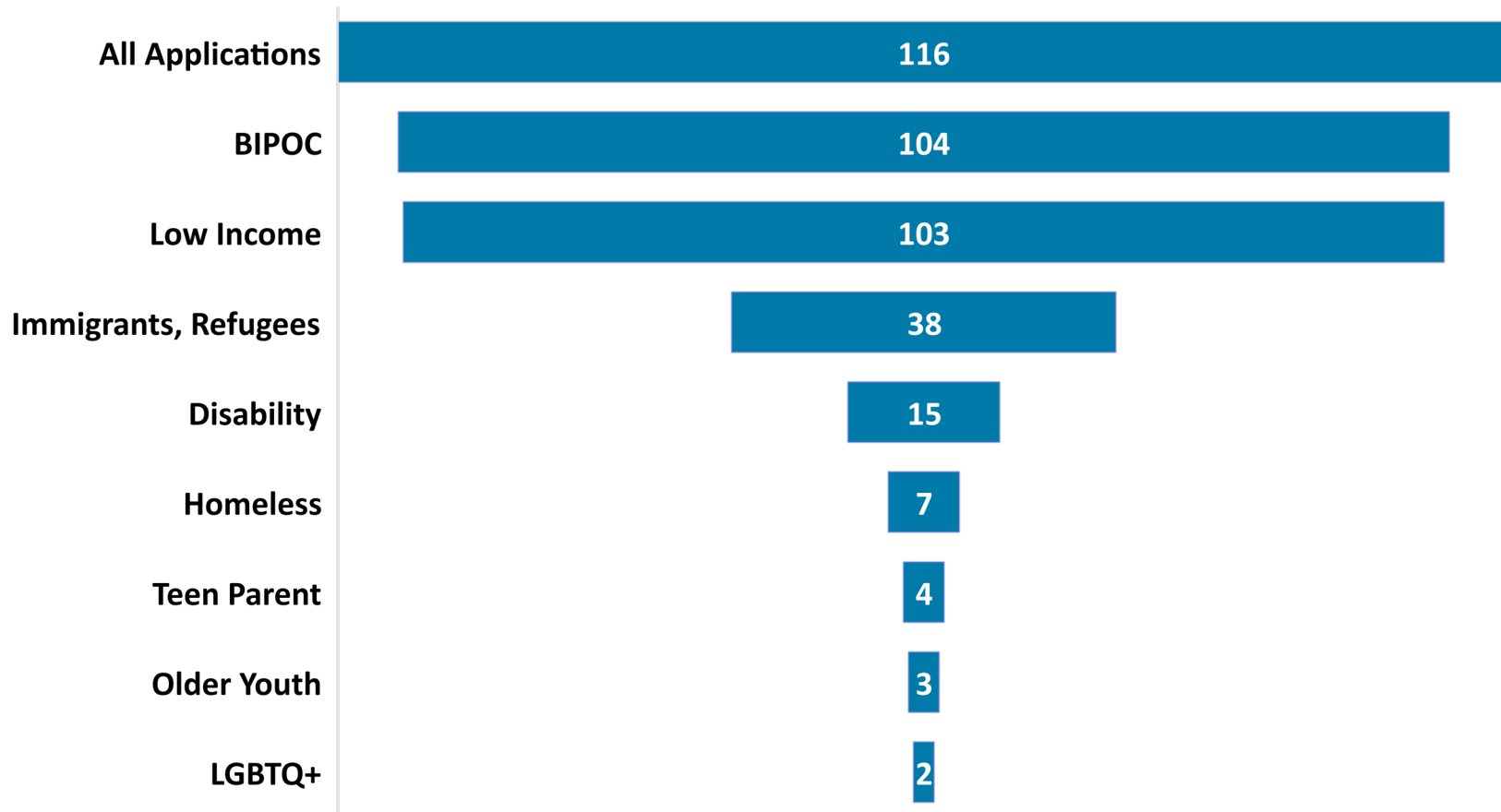
# Pair Discussion (7 min)

- What do you learn looking at the graphics?
- What don't these graphics tell you?
- What confusions do you have about the graphics?



# Applications: focus population(s)

Number of Applications\* serving one or more focus population(s)

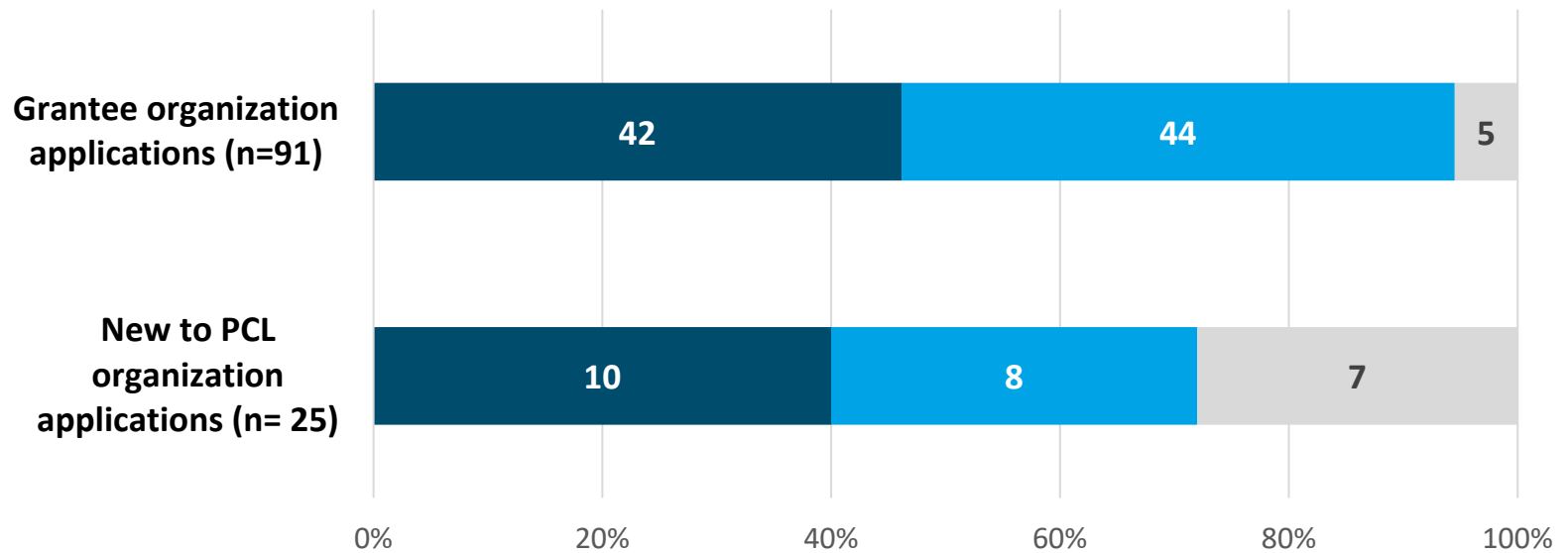


\*Applications were counted multiple times, for each focus population they selected.



# Applications: organization, focus populations

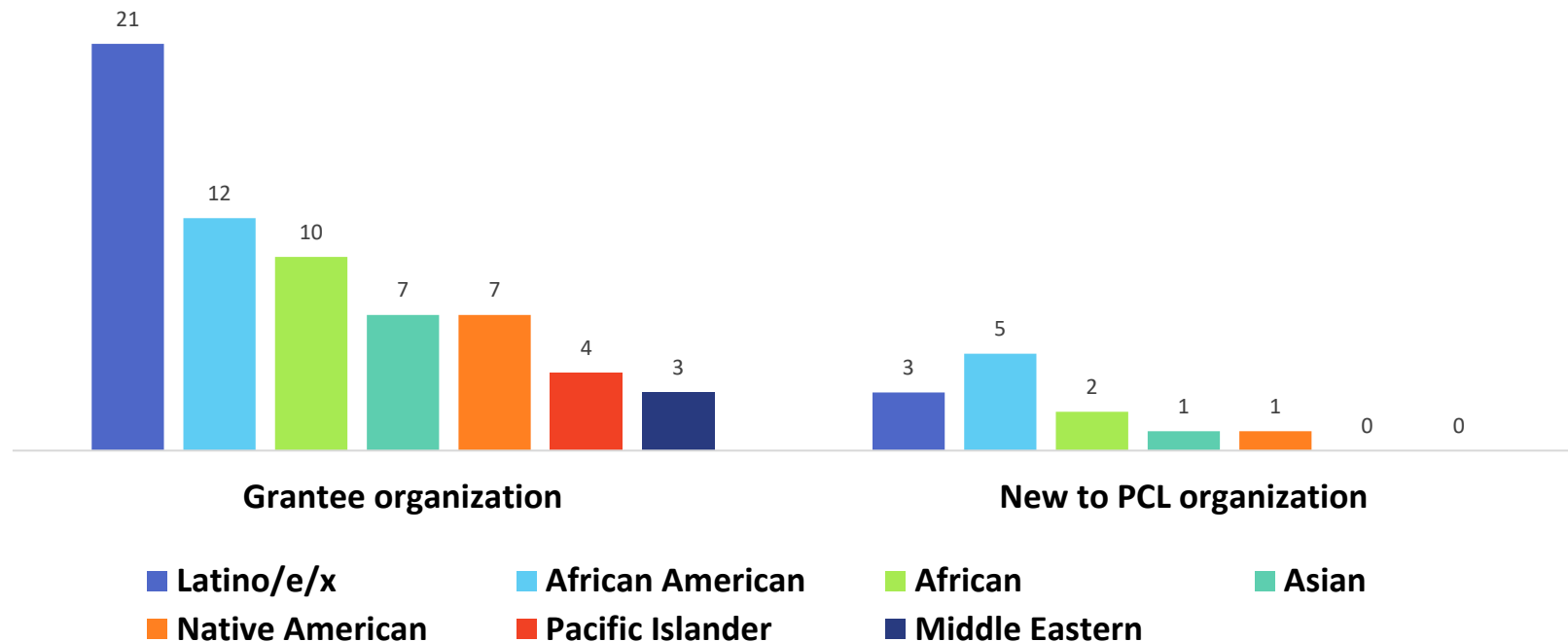
Number of applications and racial/ethnic focus population



- Applications with specific racial/ethnic focus population(s)
- Applications with focus on BIPOC communities in general
- Applications with no specific racial/ethnic focus population or BIPOC focus generally

# Applications: organization, racial/ethnic focus populations

Number of applications\* with specific racial/ethnic focus population(s)



\*Applications were counted multiple times, for each population they proposed to serve.



# Pair Discussion (7 min)

- What do you learn looking at the graphics?
- What don't these graphics tell you?
- What confusions do you have about the graphics?

# Application scores and equity

## Organization section

52 points

### 44 of 52 points focus on equity

- goals/purpose of organization; client/staff/board demographics; workforce practices, organization impact

## Program section

80 points

### 64 of 80 points focus on equity

- community needs/voice, funding priorities and program features from community engagement, experience with population, outcomes, program staffing, outreach, accessibility & inclusion, connection to org EDI goals

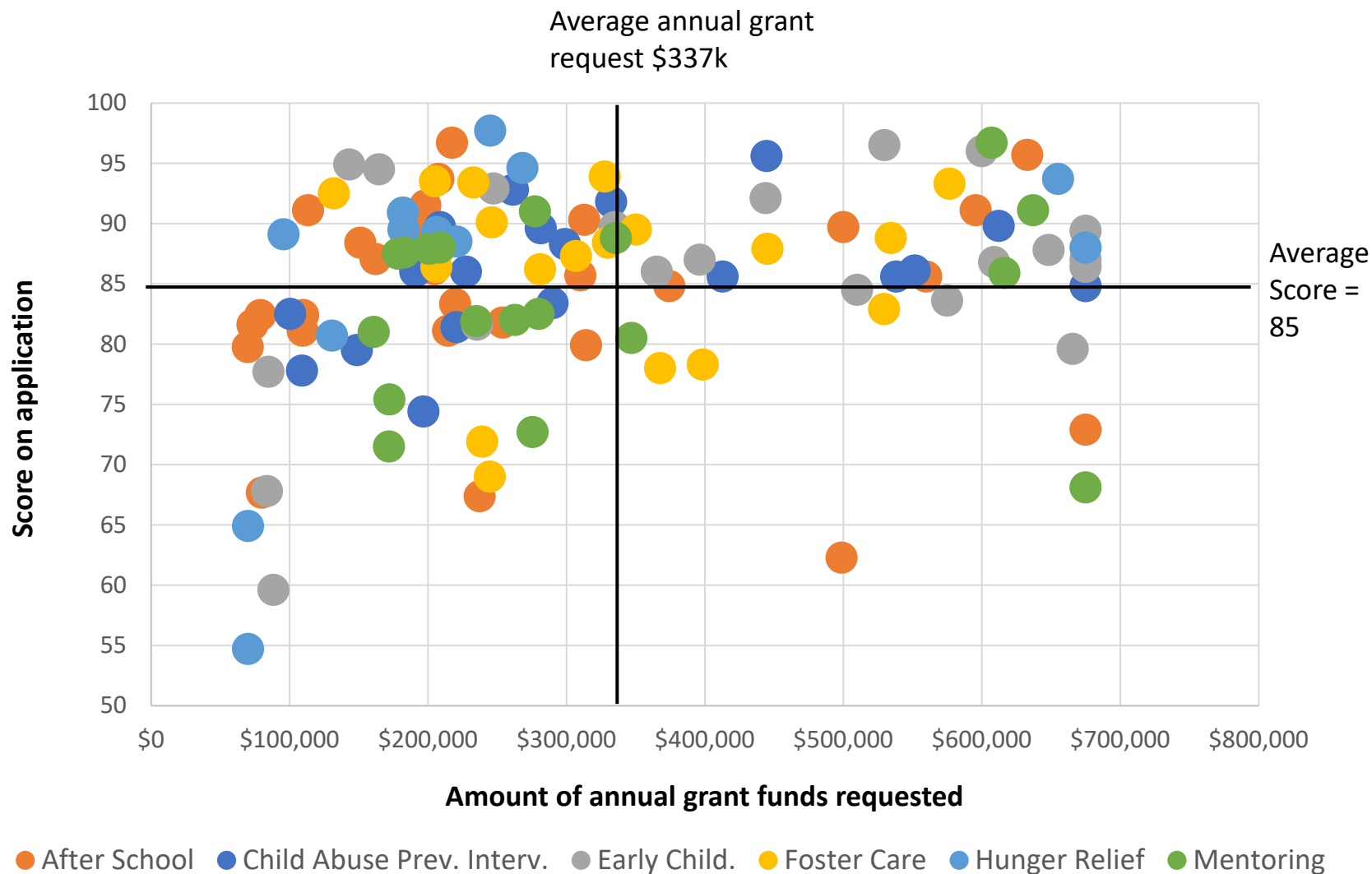
## Budget section

20 points

*This section focuses on understanding cost assumptions and calculations of the budget.*

**70%**  
of total  
points  
highly  
focused  
on equity

# Applications: scores, funds requested



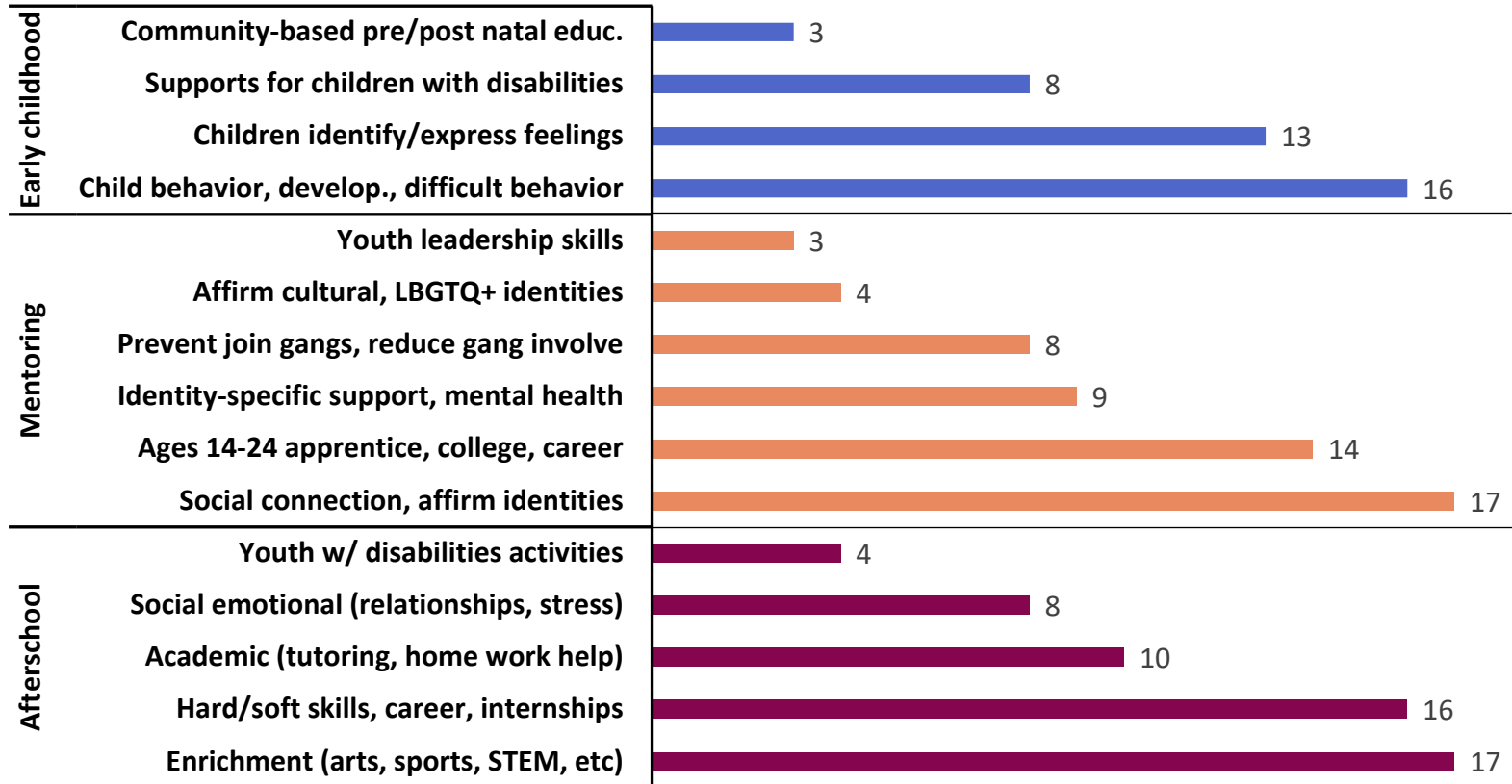


# Pair Discussion (3 min)

- What do you learn looking at the graphics?
- What don't these graphics tell you?
- What confusions do you have about the graphics?

# Applications: funding priorities

Number of applications\* addressing funding priorities  
After school, Mentoring, Early Childhood

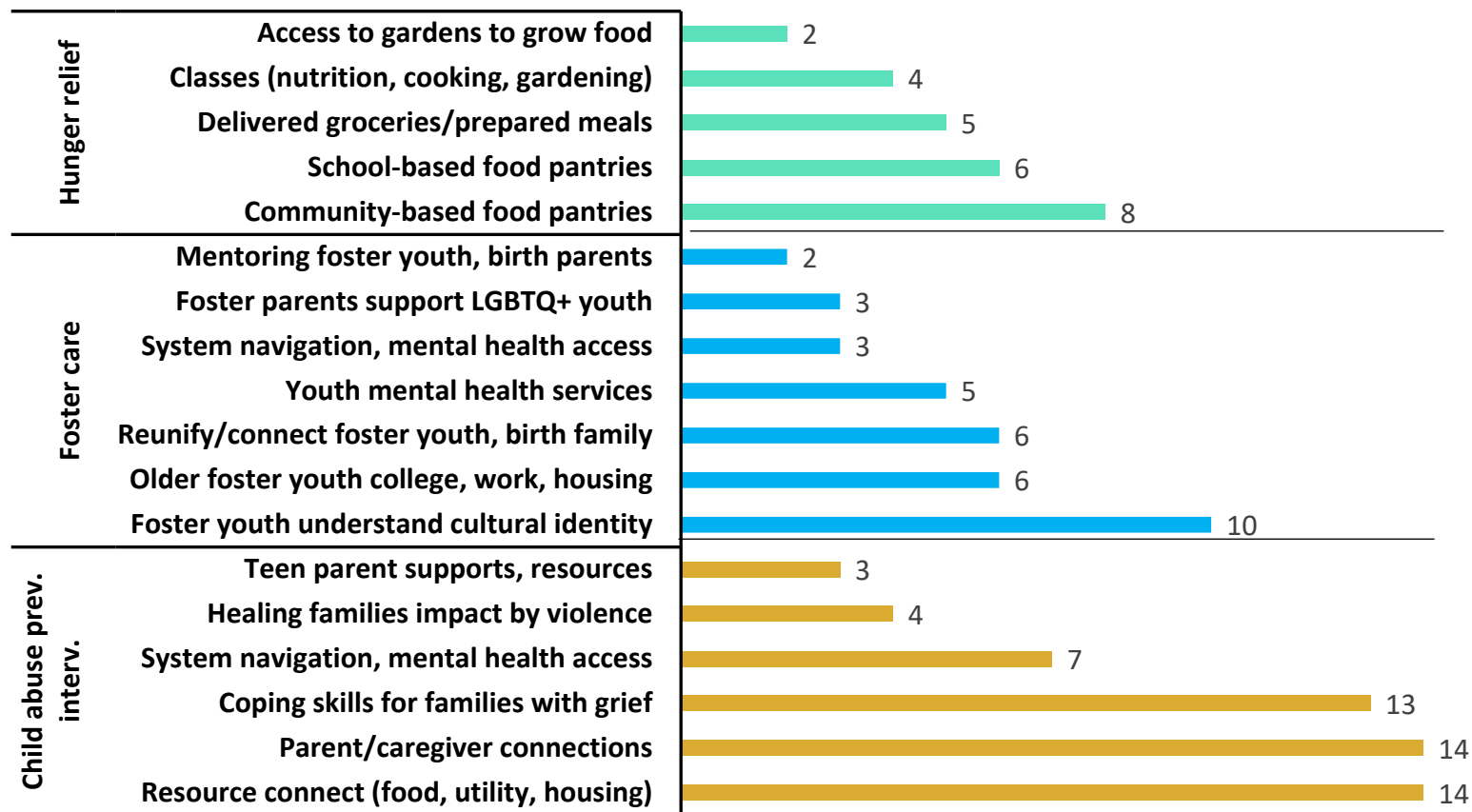


\*Applications were counted multiple times, for each funding priority they selected.



# Applications: funding priorities

Number of applications\* addressing funding priorities  
Foster Care, Child Abuse Prev. Interv., Hunger Relief



\*Applications were counted multiple times, for each funding priority they selected.



# Pair Discussion (3 min)

- What do you learn looking at the graphics?
- What don't these graphics tell you?
- What confusions do you have about the graphics?