



Investing in our future
**portland
children's
levy**



2011-2012 Progress Report



Dear Portlander:

More than ten years ago we asked you to say yes to a new idea: a city initiative to help Portland's neediest children and families. With passage of the Portland Children's Levy in 2002 and overwhelming renewal in 2008, your support has allowed us to invest in proven, cost-effective programs reaching tens of thousands of children and families. That includes:

- ✓ **Early childhood programs to ensure kids arrive at kindergarten ready to learn;**
- ✓ **After-school and mentoring programs that motivate students to stay in class, attain better grades and keep them safe after school;**
- ✓ **Child abuse prevention and intervention programs to help children overcome the trauma of abuse and prevent other children from experiencing abuse and neglect;**
- ✓ **Foster care programs that help children beat the daunting odds they face and provide them with a path to success now and in the future.**

We have kept our commitment to voters to have annual audits, citizen oversight and cap administrative expenses at 5 percent, meaning that 95 cents of every dollar collected is invested in cost-effective proven programs benefiting Portland children.

Our city decided to give its most vulnerable residents a chance for a happy and successful future. Your ongoing commitment to Portland's children is making that dream possible.

Dan Saltzman

Portland City Commissioner

Chair, Portland Children's Levy Allocation Committee

dan@portlandoregon.gov

503-823-4151





Spotlight on Our Success

In 2011-12, Portland Children's Levy investments linked 18,000 children with proven, cost-effective programs that built healthy families creating a stronger city. All funded programs are monitored by staff and subject to regular site visits and performance assessments.



Investing in our future

**portland
children's
levy**

Early Childhood

- Early childhood education and intervention
- Parenting education
- Affordable, high-quality childcare

After-School and Mentoring

- Quality programs to promote academic achievement in core subject areas and music, art and athletics
- Positive and consistent peer role models
- Tutoring, homework assistance, community service and college prep activities

Child Abuse Prevention and Intervention

- Intensive case management, counseling and therapy
- Respite care
- Parenting education and family support
- Therapeutic classrooms

Foster Care

- Placement stability
- Shortened length of time in foster care
- Educational support networks, especially during major school transitions, as well as for youth aging out of foster care
- Mentoring, enrichment activities and mental health services

Cost Effective and Proven Financial Accountability

The most recent audit completed in February 2013 by independent auditor McDonald Jacobs, PC found that administrative expenses were less than 5 percent of revenues, were necessary and proper and all grant disbursements were properly documented and in accordance with approved budgets.

Portland Children's Levy ~ July 1, 2011 - June 30, 2012

REVENUES

Earned in FY 2011-2012	\$ 10,826,475
Accrued from July 1, 2003 - June 30, 2011	4,235,855
Total	\$ 15,062,330

INVESTMENTS AND COMMITMENTS

Program Investments, FY 2011-2012	
Early Childhood	\$ 4,371,510
After School	2,774,880
Child Abuse Prevention & Intervention	2,260,361
Foster Care	1,653,690
Mentoring	1,432,698
Leverage Fund	944,102
Administration, FY 2011 - 2012	\$ 565,157
Encumbered Funds, FY 2012 - 2013	\$ 1,059,662
Total	\$ 15,062,330

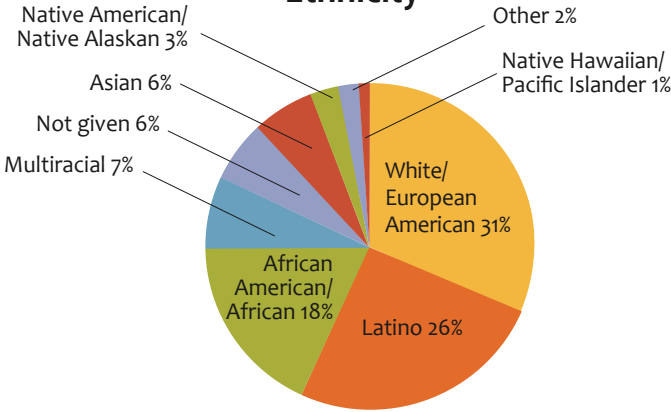


City homeowners support the Levy through a property tax of about \$60 a year for a home with an assessed value of \$150,000.

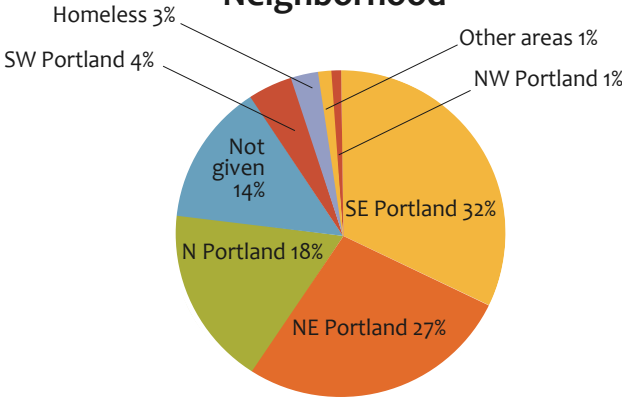


Our Children

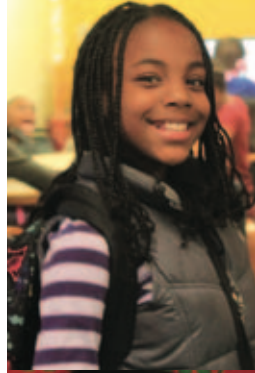
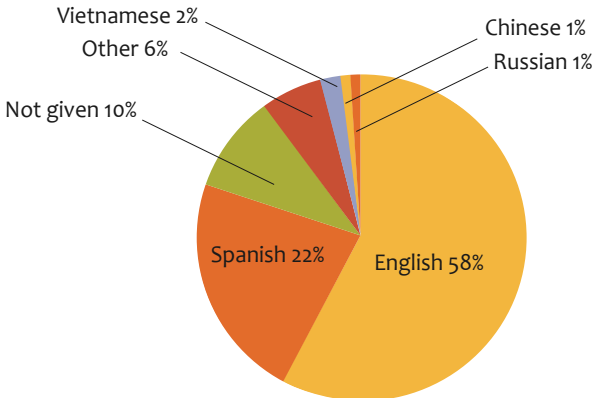
Ethnicity



Neighborhood

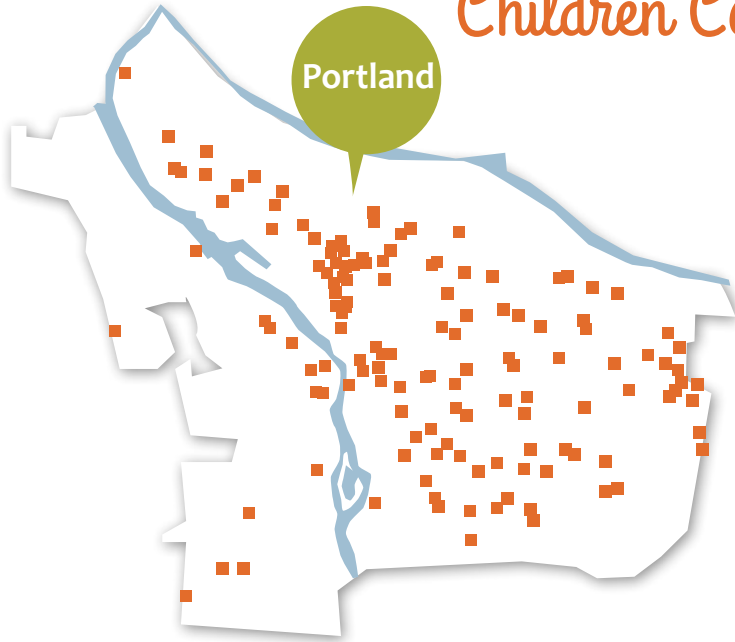


Primary Language Spoken at Home



* A detailed breakdown of Portland Children's Levy demographics, including numbers of children served by city Zip Code can be found on the Portland Children's Levy website at www.portlandchildrenslevy.org.

We've Got Portland's Children Covered



Dots represent Levy-funded programs located throughout the city. Not shown are hundreds of sites for childcare providers, Head Start and Early Head Start locales and homes of children receiving home-based services.

Making Good Decisions: *our Allocation Committee*

The Portland Children's Levy is overseen by a five-member Allocation Committee that meets publicly to make funding decisions. It is composed of one Portland City Commissioner, one Multnomah County Commissioner and three citizen members appointed by the City, County and Portland Business Alliance respectively.

2011-12 Members:

Dan Saltzman, Portland City Commissioner
Allocation Committee Chair

Deborah Kafoury, Multnomah County Commissioner

Julie S. Young, Youth advocate and community volunteer

Adrienne Livingston, Executive Director,
Black United Fund of Oregon

Ron Beltz, Senior Vice President,
APIC Property Management, LLC

Early Childhood

Leading economic experts agree that early childhood education has the highest return of any public investment. Participation in high-quality early childhood programs is linked with better reasoning and language skills and the development of healthy emotional and social traits.

Programs to support children and families to prepare for kindergarten:*

- 89 percent of 616 children screened for progress in meeting child development milestones were on track to meeting milestones and the remaining 11 percent were making progress toward those goals.
- 81 percent of families reported reading aloud with their children at least three times per week.
- 100 percent of children at childcare centers with access to Portland Children's Levy-funded mental health consultants were not removed from their preschool setting because of behavioral problems.
- 94 percent of parents demonstrated or increased positive parent-child interactions.

* In Portland Children's Levy programs that measure these outcomes



After School/Mentoring

Quality after-school programs provide older students a safe place to learn and have fun while mentoring programs offer vital one-to-one help to increase academic and social skills. Mentored teens are less likely to become involved with drugs and more likely to get better grades and set higher expectations for themselves.

After School and Mentoring programs made a difference for these students in and out of the classroom last school year:

- 80 percent attended school at least 90 percent of the time.
- 83 percent improved their attitude toward/ connection to school.
- 75 percent who were suspended or expelled the previous year received fewer or no referrals resulting in suspension or expulsion.
- 76 percent maintained or increased self confidence and positive social behaviors.



Child Abuse Prevention/Intervention

Child abuse prevention and intervention programs promote resiliency and increase stability for vulnerable children and families. Children in families struggling with these issues learn to build healthy, strong connections with social support systems that lead to positive meaningful and lasting changes.

Child Abuse Prevention/Intervention programs reach at-risk children and stressed families:*

- 75 percent of 200 children screened for social/emotional development were on track to meeting milestones.
- Multnomah County Child Abuse Hotline received no substantiated reports of child abuse for 82 percent of families within six months of completing services.
- Almost 75 percent of parents increased their access to and/or use of social supports.
- 85 percent or more of parents demonstrated improved parent-child interaction or increased their knowledge of child development/behavior.

* In Portland Children's Levy programs that measure these outcomes



Foster Care

Quality services for children in foster care have a multi-layered effect for both children and society: increased school success and graduation rates; decreased juvenile crime rate and substance abuse rates; lower rate of child maltreatment.

Foster Care programs help the city's most vulnerable children:*

- 90 percent improved their school behavior/academic success.
- 86 percent improved their school stability.
- 96 percent of birth parents improved their parenting skills.
- 100 percent of families had no further substantiated reports of child abuse within six months of reuniting with their children.

* In Portland Children's Levy programs that measure these outcomes



2011-2012 Programs

Early Childhood Programs

Albina Early Head Start ■ Early Head Start classroom and home-based Early Head Start services; N, NE, SE Portland. www.albinajobs.org

Cascade AIDS Project ■ Case management and support services to HIV-affected children; citywide. www.cascadeaids.org

Friendly House Preschool ■ Subsidized preschool for children from low-income families; NW Portland. www.friendlyhouseinc.org

Hacienda CDC ■ Home-visit child development services and base management with families in Hacienda locations; N, NE Portland. www.haciendacdc.org

Immigrant & Refugee Community Organization ■ Home-visit child development services with immigrants & refugees; citywide. www.irco.org

Impact Northwest ■ Home-visit child development services, case management and kindergarten transition services; NE, SE Portland. www.impactnw.org

Latino Network ■ Early literacy services with Latino families focusing on pre-kindergarten children and their parents; E Portland. www.latnet.org

Morrison Child & Family Services ■ Mental health consultation, parenting education, child mental health outpatient services with 10 childcare sites & preschools; citywide. www.morrisonkids.org

Morrison Child & Family Services Listos Para Aprender ■ Home-visit child development services and case management with Latino families; citywide. www.morrisonkids.org

Mt. Hood Community College Head Start ■ Early Head Start classroom-based and home-based services; SE Portland. www.mhcc.edu

Mt. Hood Community College Childcare Resource & Referral ■ Quality enhancement for childcare providers and affordability support for low-income working families; citywide. www.ccrf-mc.org

Multnomah County Library Foundation ■ Raising a Reader early reading program in preschools and childcare; citywide. www.libraryfoundation.org

Neighborhood House Early Oregon Pre-Kindergarten ■ Home-based services modeled after Early Head Start; N, NW, SW Portland. www.nhweb.org

Neighborhood House Child Care Improvement Project ■ Quality improvement and support for two networks of in-home childcare providers; SE, SW Portland. www.nhweb.org

Peninsula Children's Center ■ Childcare quality and affordability for children from low-income families; N, NE Portland. www.penchild.org

Portland Community College Child Development Center ■ Evening and summer childcare and parent education classes at Sylvania campus; SW Portland. www.pcc.edu/resources/child-care/development-center/index.html

Portland Public Schools Head Start ■ Three extended-day Head Start classrooms; SE Portland. www.pps.k12.or.us/departments/head-start/

After-School Programs

Boys & Girls Clubs of Portland Metropolitan Area ■ After-school program and mental health counseling at Club sites; N, NE, outer SE Portland. www.bgcpportland.org/

Camp Fire USA Portland Metro Council ■ After-school academic, recreation and service learning program at three elementary schools; outer SE Portland. <http://campfirecolumbia.org/>

Chess for Success ■ After-school chess program at eight schools; outer NE, SE Portland. www.chessforsuccess.org

The Children's Course ■ After-school golf program to build athletic skills and help youth develop other life skills; N Portland. www.thefirstteegreaterportland.org

Community Cycling Center ■ After-school bike safety Club at five elementary schools; N, NE Portland. www.communitycyclingcenter.org

Ethos Music Center ■ After-school music education program at 13 schools for students in grades 2-8; N, NE Portland. <http://ethos.org>

Friendly House ■ After-school program for homeless children; citywide. www.friendlyhouseinc.org

Girls Inc. of Northwest Oregon ■ After-school program for girls focused on youth development at eight schools for students ages 8-15; citywide. www.girlsinc.org/

Immigrant & Refugee Community Organization ■ After-school program, family services and parent education for immigrants/refugees at five schools for students in grades 5-8; SE Portland. www.irco.org

Impact Northwest ■ SUN Community School program for children at Whitman Elementary School and Franklin High School; SE Portland. www.impactnw.org

Impact Northwest ■ Urban Opportunities program to prepare at-risk youth with accredited workforce employment training and job readiness skills; N, NE, SE Portland. www.impactnw.org

Impact Northwest ■ After-school science program at 40 SUN Community Schools in Portland; citywide. www.impactnw.org

Metropolitan Family Service ■ SUN Community School program at Glenfair Elementary and Parklane Elementary; outer NE, SE Portland. www.metfamily.org

NAYA Family Center ■ Academic support, cultural and sports after-school program for Native American/Native Alaskan students ages 5-18; citywide. www.nayapdx.org

Neighborhood House ■ SUN Community School program at Jackson Middle School; SW Portland. www.nhweb.org

Northwest Family Services ■ After-school program for Latino youth at seven schools; N, SE Portland. www.nwfs.org

Open Meadow ■ After-school program offering tutoring, advocacy and leadership training at Madison, Franklin and Roosevelt high schools for 9th and 10th graders. www.openmeadow.org

Saturday Academy ■ After-school enrichment programs at 12 schools in grades 1-8; N, NE, SE Portland. www.saturdayacademy.org

Self Enhancement, Inc. ■ After-school academic and enrichment services for children in grades 4-8, focused on African-American youth; N, NE Portland. www.selfenhancement.org

Tears of Joy Theatre ■ Arts-based after-school program at five schools for students in grades 1-8; N, NE Portland. www.tojt.org

Mentoring Programs

Big Brothers Big Sisters of Columbia Northwest ■ Community-based, one-to-one mentoring program; citywide, with focus on outer SE Portland. www.bbbsnorthwest.org

Big Brothers Big Sisters of Columbia Northwest ■ School-based mentoring program; N, NE and outer SE Portland. www.bbbsnorthwest.org

Friends of the Children ■ Long-term, community-based, one-to-one mentoring program for children grades K-12; citywide. <http://friendspdx.org/>

Immigrant and Refugee Community Organization ■ Community-based one-to-one and group mentoring program for African immigrant youth in middle and high school; NE, SE Portland. www.irco.org

Impact Northwest ■ School and community-based, one-to-one mentoring program at 10 elementary schools; NE, SE Portland. www.impactnw.org

Lutheran Community Services NW ■ Community-based mentoring program focused on immigrant youth from Burma, East Africa and Eastern Europe; citywide. www.lcsnw.org/portland/index.html

Metropolitan Family Service ■ One-to-one mentoring program serving seven elementary schools, retirees serve as mentors; N, NE, SE Portland. www.metfamily.org/

Portland OIC ■ School-based mentoring for students attending Rosemary Anderson High School; N Portland. www.portlandoic.org

SMART ■ Literacy mentoring program for children grades K-3 at 15 elementary schools; N, NE, SE Portland. www.getsmartoregon.org

Trillium Family Services ■ Family-to-child mentoring program for elementary school children; N, NE, SE Portland. www.trilliumfamily.org

Child Abuse Prevention and Intervention Programs

CARES Northwest ■ Assessment services for children with urgent child abuse concerns; citywide. www.caresnw.org

Catholic Charities ■ Therapeutic intervention services for Latino children of victims of domestic violence; citywide. www.catholiccharitiesoregon.org

Children's Relief Nursery ■ Classroom-based therapeutic care for children ages 0-3, home visits, parenting education and respite care; citywide. www.crn4kids.org

Janus Youth Programs ■ Counseling and group services for homeless youth; citywide. www.jyp.org

Janus Youth Programs/Insights ■ Case management, parent education, home visiting and support services for teen parents and their children; citywide. <http://insightstpp.org/>
LifeWorks NW ■ Case management and skills development and violence prevention classes for middle-school age children at risk for abuse; N, NE and SE Portland. www.lifeworksnw.org

LifeWorks NW ■ Case management and home visiting services for families at risk for child abuse; citywide. www.lifeworksnw.org

Listen to Kids ■ Therapeutic intervention services for children of victims of domestic violence; citywide. www.impactnw.org

Lutheran Community Services NW ■ Culturally specific family support program for immigrants and refugees from Africa and Eastern Europe; citywide. www.lcsnw.org/portland/index.html

Pathfinders of Oregon ■ Parenting classes, case management and home visiting services for families involved in the criminal justice system or are at risk; citywide. www.pathfindersoforegon.com/programs/childrens-justice-alliance/

Salvation Army/West Women's and Children's Shelter ■ Therapeutic intervention services for children of victims of domestic violence; citywide. <http://www.tsacascade.org>

Volunteers of America ■ Services for children, youth and parents at the Gateway Center for Domestic Violence Services in East Portland. www.voaoor.org

Volunteers of America ■ Classroom-based therapeutic care for children ages 0-5, home visits, parenting education and respite care; citywide. www.voaoor.org

Foster Care Programs

Big Brothers Big Sisters of Columbia Northwest ■ Mentoring for children in the foster care system; citywide. www.bbbsnorthwest.org

Boys & Girls Aid ■ Child-specific recruitment services to secure permanent adoptive homes for children in foster care; citywide. www.boysandgirlsaid.org

Children's Relief Nursery ■ Comprehensive relief nursery services to support children in foster care and their biological or foster care parents; N, NE Portland. www.crn4kids.org
Impact Northwest ■ Program to provide parent-child development services to children in temporary foster care; NE, SE Portland. www.impactnw.org

Janus Youth Programs/Insights ■ Case management and parent education for teen mothers and their children, where either the mother and/or the child is in foster care; citywide. <http://insightstpp.org/>

NAYA Family Center ■ Case management and enrichment services for Native American youth in foster care and support for foster parents; citywide. www.nayapdx.org

Randall Children's Hospital at Legacy Emanuel ■ Health coordination and health education services for children in foster care; citywide. www.legacyhealth.org

Self Enhancement, Inc. ■ Comprehensive in-school and out-of-school services for African American children in foster care; N, NE Portland. www.selfenhancement.org

Youth Rights & Justice: Attorneys at Law ■ Legal representation, advocacy and case management for children in foster care; citywide. www.jrplaw.org

Leverage Fund Supported Programs

The Leverage Fund includes collaboration grants that support funder-initiated partnerships in Portland Children's Levy funding areas and challenge grants that require dollar-for-dollar matches.

Collaboration Grants

Building Parent Leadership for School Improvement with Latino Network and the Black Parent Initiative

Partners include Portland Public Schools, Oregon Community Foundation, NW Natural and the Chalkboard Project.

Cradle to Career with All Hands Raised
Partners include Living Cities, Wieden & Kennedy, Paul G. Allen Family Foundation and NW Natural.

Earl Boyles Early Learning Demonstration Project with the Children's Institute
Partners including Oscar G. and Elsa S. Mayer Family Foundation, Maybelle Clark Macdonald Fund, Meyer Memorial Trust and Annie E. Casey Foundation.

Parenting Education System/Metro Region with the Oregon Community Foundation
Partners include Oregon Community Foundation and Social Ventures Partners Portland.

Portland State University Trauma Informed Care Project with Impact Northwest and Catholic Charities
Partners include the Gates Foundation and Meyer Memorial Trust.

Challenge Grants

Children's Relief Nursery Eastside Expansion
Partners include the MJ Murdock Charitable Trust and the Collins Foundation.

Hacienda CDC Expresiones After-School Program
Partner includes the United Way of the Columbia-Willamette.

Janus Youth Programs/Insights Safehome
Partner includes Multnomah County.

Morrison Child & Family Services Family Sexual Abuse Treatment Program
Partners include Multnomah County and the Oregon Department of Human Services.

Neighborhood House Sol in New Columbia
Partners include the Housing Authority of Portland and Meyer Memorial Trust.

Peninsula Children's Center Childcare Quality Indicators Project
Partners include the Templeton Foundation, the Jubitz Foundation, the O.P. and W.E. Edwards Foundation and individual donors.

Portland OIC/Rosemary Anderson High School After-School Program
Partners include the Kuse Family Foundation, Precision Castparts, the Rennecker Family Fund and Work Systems, Inc.

Self Enhancement, Inc. Parent Involvement Program
Partners include the Ann & Bill Swindells Charitable Trust and Consolidated Supply Co.
The Library Foundation Raising a Reader Program
Partners include the Collins Foundation, Spirit Mountain Community Fund and the Wessinger Foundation.

Thanks
to you
Portland,
your
support
means:

- **18,000** of our most vulnerable children and families received services.
- **1,870** parents participated in classes or home visiting services focused on children's development, behavior, health and safety.
- More than **2,700** hours of respite care were provided for parents of young children at risk of abuse and neglect.
- More than **\$325,000** in scholarships was provided for low-income children and working families to attend center-based and family-based quality childcare facilities.
- More than **800** children received childcare while their mothers received help at the Gateway Center for Domestic Violence Services.
- Nearly **6,500** students participated in school and community-based after-school programs in all five city school districts: Portland, David Douglas, Parkrose, Centennial and Reynolds.
- Nearly **2,000** students participated in mentoring programs.



The Portland Children's Levy helps kids and families succeed by supporting:

Ready for
kindergarten

Early child
literacy

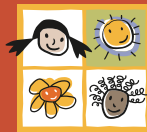
Positive
parenting/
family
functioning

Child
stability and
welfare

Consistent
school attendance,
academic
achievement
and homework
completion

Child
health and
wellness

Positive
social behaviors,
self confidence
and connection
to school



Investing in our future

**portland
children's
levy**

319 SW Washington, Suite 415 Portland, OR 97204 T 503-823-2936 F 503-823-2979
www.portlandchildrenslevy.org

Follow us on Facebook