

portland children's levy

2009-2010
Progress Report





Dan Saltzman



MAKING FOR A STRONGER CITY SINCE 2002

Dear Portlander,

I am pleased to present this annual report which highlights the new investments made possible by the renewal of the Portland Children's Levy. The Levy was created in 2002, and thanks to you, it was overwhelmingly renewed in 2008 during troubled economic times with a 72 percent approval rate.

You saw that investing in our children equates to long-term benefits including better educational attainment, earning capacity and lower rates of delinquency, crime and school failure. With the help of the Levy, 16,000 children and families have a safety net. Students arrive at school ready to learn, are engaged in the classroom, and stay safe after the bell rings.

Also, the Levy's financial support comes at a crucial time for social service organizations. These nonprofits, already operating with lean budgets, wrestle with growing wait lists of needy families coupled with fierce competition for other funding.

But through new Levy investments made in 2009-10, a helping hand extends to proven programs, big and small, all with a track record of success: Head Start and Early Head Start, SMART, Big Brothers Big Sisters, Boys and Girls Clubs, Salvation Army, and Volunteers of America to name a few. The Levy is audited annually and operates under a 5 percent administrative cap, which means that 95 cents of every dollar goes back into these programs.

This year, the Levy launched a new foster care funding category. Children in foster care face innumerable obstacles: poverty, housing instability, under employment, and education levels lower than their non-foster care peers. We are proud to fund nine new foster care programs.

Also in this round of investments, the Levy strategically targeted services for culturally-specific programs and to services in East Portland. 39 percent of children who participated in Levy programs live or attend school east of 82nd Avenue.

We're pleased that a new \$3 million Leverage Fund, partnering private and public dollars, maximizes your investment and doubles resources for children throughout the city.

Inside this report you'll read about some of the success stories that have emerged from the Portland Children's Levy.

Sincerely,

Dan Saltzman
Portland City Commissioner
Chair, Portland Children's Levy
Allocation Committee
dan@portlandoregon.gov
503-823-4151



www.portlandchildrenslevy.org

Find us on Facebook



HOW WE INVEST YOUR DOLLARS

2009-10 was a busy time for the Portland Children's Levy as it was the first year of our latest investment round and saw the launch of a new funding area: helping children in foster care succeed.

Our investments receive funding through a competitive grant process that includes reviewers who participate in reading and scoring proposals before final action by the Levy's Allocation Committee.

Organizations must demonstrate a track record of success, be cost effective and achieve positive results for children. All funded programs are monitored by staff and subject to regular site visits and performance assessments.

YOUR INVESTMENTS SUPPORT THESE OUTCOMES:

- On-track child development
- Child health and wellness
- Child early literacy
- Parenting/family functioning
- Child stability and welfare
- Improved school attendance, behavior and academic achievement and homework completion
- Increased positive social behaviors, self confidence and connection to school

OUR ALLOCATION COMMITTEE

The Portland Children's Levy is overseen by a five-member Allocation Committee that meets publicly to make funding decisions. It is composed of one Portland City Commissioner, one Multnomah County Commissioner and one citizen member appointed by the City, County and Portland Business Alliance respectively.

Current members are:

Dan Saltzman,
Portland City
Commissioner,
Allocation
Committee Chair

Deborah Kafoury,
Multnomah County
Commissioner

Alissa Keny-Guyer,
Consultant for
foundations &
nonprofits

Adrienne Livingston,
Executive Director,
Black United Fund of
Oregon

Ron Beltz,
Senior Vice President
APIC Property
Management, LLC

ON THE COVER: *Youngsters at Friendly House Preschool discover a tiny world of creepy crawlies at the early childhood program in Northwest Portland, one of 18 early childhood programs supported by the Portland Children's Levy.*

WE REACH 16,000 CHILDREN AND FAMILIES EACH YEAR

Our services help break the cycle of poverty many children face. By building community connections, the foundation is laid for stronger families and a stronger city.

Inside this report you'll see how your support has translated into healthy children and thriving families, making for a flourishing Portland.



Volunteers foster a love of reading in the children they mentor through the SMART program. Students in need of literacy support are referred by their teachers for the one-on-one mentoring program.

New Investment Area!

EARLY CHILDHOOD

Participation in high-quality early childhood programs is linked with better reasoning and language skills and the development of healthy emotional and social traits. Leading economic experts agree that early childhood education has the highest return of any public investment.

Children enter kindergarten prepared to succeed including:

- Early childhood education and intervention
- Parenting education
- Affordable, high-quality childcare

AFTER SCHOOL & MENTORING

Quality after-school programs provide older students a safe place to learn and have fun while mentoring programs offer vital one-on-one help to increase academic and social skills. Mentored teens are less likely to become involved with drugs and more likely to get better grades and set higher expectations for themselves.

Students are engaged in school and stay safe after school through:

- Quality programs to promote academic achievement in core subject areas and music, art and athletics
- Positive and consistent adult and peer role models
- Tutoring, homework assistance, community service and college prep activities

CHILD ABUSE PREVENTION & INTERVENTION

These programs promote resiliency and increase stability for vulnerable children and families. Children in families struggling with violence, abuse and neglect learn to build healthy, strong connections with social support systems that lead to positive, meaningful and lasting changes.

Stressed children and families most at risk receive support and intervention services with:

- Intensive case management, counseling and therapy
- Respite care
- Parenting education and family support
- Therapeutic classrooms

FOSTER CARE

Quality services for children in foster care have a multi-layered effect for both the child and society: increased school success and graduation rates, decreased juvenile crime and substance abuse rates and lower rates of child maltreatment.

Kids in foster care have a greater chance at success because of:

- Placement stability
- Shorten length of foster care stay
- Educational support networks, especially during major school transitions, as well as for youth aging out of foster care
- Mentoring, enrichment activities and mental health services

A visit from Multnomah County Library staff at a NAYA Family Center event means new books to take home for children in NAYA's Foster Care program.



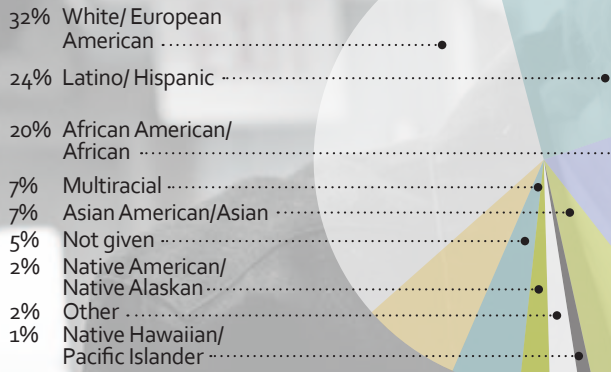
*The Chess for Success motto:
"Helping children succeed one move a time."*



THANK YOU PORTLAND! BECAUSE OF YOUR SUPPORT, LAST YEAR:

- 16,000 children, including those in foster care, received services.
- More than 1,000 parents participated in classes or home visiting services focused on children's health, development, nutrition and safety.
- More than 4,700 hours of respite care were provided for parents of young children at risk of abuse and neglect.
- 19 childcare centers and 30 family childcare providers received support to improve their quality.
- 83 percent of families participating in the Raising a Reader program reported reading aloud with their children at least three times/week.
- More than 5,500 students participated in school and community-based after-school programs in five city school districts: Portland, David Douglas, Parkrose, Centennial and Reynolds.
- More than 2,100 students participated in mentoring programs.

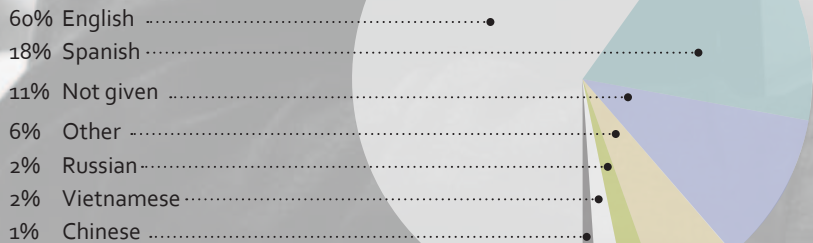
ETHNICITY



NEIGHBORHOOD*



PRIMARY LANGUAGE SPOKEN AT HOME



BEATING THE ODDS

A majority of the children we serve come from low-income households. They face a lack of opportunity that comes with poverty, abuse and neglect, homelessness and drug and alcohol abuse. They attend schools in districts that have a substantially lower graduation rate than the state average; a figure even more bleak for Latino, African American and Native American students, who begin kindergarten behind their white peers in areas such as communication and cognitive skills.

But Levy programs level the playing field for 16,000 children and their families each year so they can overcome historical and institutional barriers and succeed in their home, in their school and in their neighborhood.

*A detailed breakdown of Portland Children's Levy demographics, including number of children served via city Zip Code, is available on the Levy website at www.portlandchildrenslevy.org

EARLY CHILDHOOD



Achieve

Based on results of more than 1,200 child development screenings performed with children in Early Childhood Levy programs, 90 percent of the children were meeting key milestones in growth and development. The remaining 10 percent were making progress toward meeting those milestones.

Acquire

93 percent of children participating in early literacy/school readiness programs improved their recognition of letters, numbers and colors.

Accomplish

Your funding is helping some of the city's most vulnerable children by boosting the quality of childcare centers and home-based childcare providers, as well as providing childcare scholarships for 304 low-income children of working families.

Attain

Of those parents assessed, a majority increased appropriate parenting skills and knowledge to better manage their children's behavior and interact more positively with their children.

At Friendly House Preschool, the Levy provides tuition assistance for more than a dozen children from low-income families as well as scholarships for twice weekly play groups.



Friendly House has been a long-time mainstay in Northwest Portland, providing an array of social services to residents for more than 70 years.

Bronnie Griffin attended preschool there as a child, and now a mom, was excited when her daughter Carly was old enough to attend.

"The teachers there really seem to understand the needs of the kids," she says. "It's been a really positive experience."

AFTER SCHOOL



Achieve

67 percent of students in Levy After-School programs met or exceeded state benchmarks in reading and math.

Acquire

40 percent of students in Levy After-School programs who were not meeting state benchmarks in math last year moved to a higher performance category this year. 32 percent who were not meeting in reading moved to a higher performance category.

Accomplish

85 percent of students in Levy After-School programs attended school at least 90 percent of the time.

Attain

While participating in Levy After-School programs, 75 percent of students improved their attitude about school, regularly completed their homework and increased their self confidence.

This game involves no batteries, screens or remote controls.



Chess for Success teaches more than just game moves: it imparts critical thinking, problem solving and social and organizational skills.

The twice-weekly after-school program at eight elementary schools throughout Portland provides a safe and structured place for kids to learn how to win and lose with grace ... and have fun in the process.



At James John Elementary, teachers say chess is a “universal equalizer,” giving all students the same shot at success, regardless of race, gender, culture, socioeconomic or physical prowess.

MENTORING



Achieve

56 percent of all students in Levy Mentoring programs met or exceeded state benchmarks in reading and 49 percent met or exceeded in math.

Acquire

30 percent of students in Levy Mentoring programs who were not meeting state benchmarks in math last year moved to a higher performance category this year. 23 percent who were not meeting in reading moved to a higher performance category.

Accomplish

63 percent of students in Levy Mentoring programs who were suspended or expelled last year received fewer or no referrals resulting in suspension or expulsion this year.

Attain

While participating in Levy Mentoring programs 81 percent of students increased their positive social behaviors.

Nine-year-old Tyauzanee loves her time in the cozy SMART reading room at her school. Her mentor has noticed how much more fluently she can get through her favorite books starring Frances the raccoon.

As to what she wants to do when she grows up? One thing is certain: "I'm going to be a reader!"



At Parkrose School District's Prescott Elementary, 100 students and more than 50 volunteers devour books during their weekly SMART sessions.

The school, with 95 percent of its students on free and reduced lunch, enrolls students from around the world who speak more than a dozen languages.

The Portland Children's Levy funds SMART programs at 15 Portland schools reaching nearly 750 children.

CHILD ABUSE PREVENTION & INTERVENTION



Achieve

89 percent of vulnerable children in four Levy Child Abuse Prevention & Intervention programs were on track in developing healthy social and emotional skills.

Acquire

Multnomah County Child Abuse Hotline received no further referrals for 96 percent of families in one Levy program within six months of completing services.

Accomplish

96 percent of children for whom there were concerns of abuse or neglect (in one Levy program) received comprehensive urgent medical assessments.

And 100 percent of children and families affected by domestic violence developed a safety plan with Levy help.

Attain

A majority of parents in nine Levy programs improved their parenting skills and knowledge of child development and increased their use of social support services such as housing, food and mental health services.

LaShawn Shepherd's troubled early years led to a life on the streets, unhealthy relationships and teen pregnancies. Now 30, she's determined to learn from her mistakes. She spent 16 months in substance abuse programs, has been off drugs for more than three years and has completed a number of parenting courses, all with the help of the Children's Justice Alliance (CJA) Center for Family Success.

"The Center helped me a lot. They taught me how to speak up for myself and it's made me feel good about myself and my parenting skills."



Navigating through legal red tape and bureaucracy can be especially daunting for vulnerable families who have experienced abuse. The Children's Justice Alliance (CJA) and its Center for Family Success supports moms and dads trying to become better parents.

Families receive weekly home visits from advocates such as Michelle Wright, who focus on reunification for parents with kids in the foster care system.

The center provides respite care and referrals to other community services, including housing, educational opportunities and job training so families can get back on their feet.

New Investment Area

Helping kids in foster care succeed

In 2009-10, nine new foster care investments began and 545 foster care children benefited in these programs. Our grantees serve a high percentage of Native American and African American/African children who are over-represented in the foster care system based on their Multnomah County general population.

For instance, African American children are two times more likely, and American Indian children 17 times more likely, to be placed in foster care as proportionate to their Multnomah County population.

The hurdles facing children in foster care remain as they get older, with nearly a quarter experiencing homelessness within a year of leaving the system. Studies show they receive a GED instead of a high school diploma at much higher rates than other students and just a fraction go on to receive their bachelor's degree – about 3 percent as compared with 28 percent for their peers.

While some social programs phase out youth when they turn 18, the Levy extended the age range to 24 for our foster care programs. This allows participants to continue to overcome these daunting challenges as they transition into adulthood.

FOSTER CARE



Achieve

More than half of the biological and foster parents participating in two Levy Foster Care programs demonstrated an increase in appropriate parenting practices.

Accomplish

90 percent of children who were behind academically showed improvement in school through the legal advocacy efforts of one Levy program.

Acquire

94 percent of children with identified behavioral challenges in one Levy program showed improvements in their school conduct.

Attain

74 percent of children in one Levy program improved their attitude about themselves, their future and their ability to overcome challenges.

During Sibling Visit Night at NAYA's Family Center, brothers and sisters in separate foster homes are reunited for a few hours and share a meal, a fun activity and a hug. The monthly events include social, educational and cultural elements for children and their biological and foster care parents and family members.



There is an urgent need for improved foster care services for Native Americans, as Native children are greatly over-represented in the foster care system.

NAYA's Foster Care program provides culturally relevant parenting classes, life skills training and enrichment activities for children in foster care. NAYA works to reunify parents with their children, stabilize placement within a foster care family, recruit Native American foster parents and help young adults transition out of the foster care system.





THE LEVERAGE FUND: A BIG IMPACT FOR PORTLAND KIDS

Through the Leverage Fund, our community can see its support grow...and go even further through matching contributions from the programs we invest in.

\$3 million + \$3 million = \$6 million

Too many children in Portland lack the necessary support system to help them flourish and make healthy choices. They grow up in poverty, lacking medical and educational resources. They live in households without a caring adult or with the threat of abuse or neglect.

To stretch tax dollars, the Levy's \$3 million Leverage Fund matches public dollars with private ones to maximize community impact and provide more resources for Portland children and families. "Challenge Grant" investments required organizations to match Levy funding with additional dollars from private sources in at least a 1:1 ratio. In June 2009, nine investments were made to the following organizations:



▶ **The Library Foundation Raising a Reader Program**

Early childhood literacy program providing book deliveries and training to partner sites and literacy materials to parents.

Partners include the Collins Foundation, Spirit Mountain Community Fund and the Wessinger Foundation

▶ **Children's Relief Nursery Eastside Expansion**

Expansion of child abuse prevention services for at-risk families in East Portland.

Partners include the MJ Murdock Charitable Trust and the Collins Foundation

▶ **Morrison Child & Family Services Family Sexual Abuse Treatment Program**

Family sexual abuse treatment providing specialized mental health services to children aged 4-18 who have experienced sexual abuse.

Partners include Multnomah County and the Oregon Department of Human Services

▶ **Portland OIC/ Rosemary Anderson High School After-School Program**

After-school program including academic support, credit recovery, employment training/placement and community service.

Partners include the Kuse Family Foundation, Precision Cast Parts, the Rennecker Family Fund and Work Systems, Inc.

▶ **Hacienda CDC Expresiones After-School Program**

Expansion of culturally specific program to Miraflores housing development in North Portland.

Partners include the United Way of the Columbia-Willamette

▶ **Janus Youth Programs' Safehome**

Program providing child abuse prevention and intervention services for homeless street youth who are pregnant and/or parents.

Partners include Multnomah County

▶ **Neighborhood House CASASTART in New Columbia**

Program expansion to provide intensive case management to children aged 8-13 residing in the New Columbia housing development.

Partners include the Housing Authority of Portland, the Meyer Memorial Trust and organization fundraising

▶ **Peninsula Children's Center Childcare Quality Indicators Project**

Quality enhancements to improve quality of care to obtain accreditation of the National Association for the Education of Young Children.

Partners include the Templeton Foundation, the Jubitz Foundation, the O.P. and W.E. Edwards Foundation and individual donors

▶ **Self Enhancement, Inc. Parent Involvement Program**

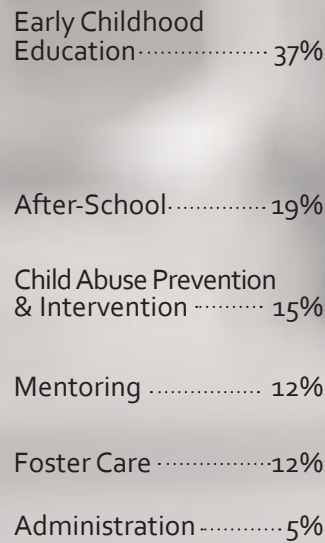
Specific family support services aimed at child abuse prevention and intervention.

Partners include the Ann & Bill Swindells Charitable Trust and Consolidated Supply Co.

FINANCIAL ACCOUNTABILITY

The Portland Children’s Levy is annually audited and administrative expenses are capped at 5 percent of revenues; 95 cents of every dollar is invested in programs helping the city’s children. The most recent audit completed in December 2010 by independent auditor McDonald Jacobs, PC found that administrative expenses were less than 5 percent of revenues, were necessary and proper, and all grant disbursements were properly documented and in accordance with approved budgets.

City homeowners support the Levy through a property tax of about \$60 a year for a home with an assessed value of \$150,0000.



Portland Children’s Levy | July 1, 2009-June 30, 2010

REVENUES

Earned in FY 2009-2010	\$ 13,681,488
Accrued from July 1, 2003-June 30, 2009	5,475,830
TOTAL	\$ 19,157,318

INVESTMENTS AND COMMITMENTS

Program Investments, FY 2009-2010	
Early Childhood	\$ 4,862,892
After School	2,477,410
Child Abuse Prevention & Intervention	1,924,530
Mentoring	1,547,962
Foster Care	1,525,851
Administration, FY 2009-2010	\$ 621,859
Encumbered Funds, FY 2010-2013*	\$ 6,196,814
TOTAL	\$ 19,157,318

*Funds available for future spending

OUR INVESTMENTS

EARLY CHILDHOOD PROGRAMS

Albertina Kerr Centers | Classroom-based therapeutic and outpatient services for children with special needs and their families; citywide. www.albertinakerr.org

Albina Early Head Start | Early Head Start classroom and home-based Early Head Start services; N, NE, SE Portland. www.albinajobs.org

Cascade AIDS Project | Case management and support services to HIV-affected children; citywide. www.cascadeaids.org

Child Care Improvement Project | Quality improvement and support for two networks of in-home childcare providers; SE, SW Portland. www.nhweb.org

Friendly House Preschool | Subsidized preschool for children from low-income families; NW Portland. www.friendlyhouseinc.org

Hacienda CDC | Child health outreach, info/referral, health education with Latino families; citywide. www.haciendacdc.org

Immigrant & Refugee Community Organization | Home-visit child development services with immigrants & refugees; citywide. www.irco.org

Impact Northwest | Home-visit child development services, case management and kindergarten transition services; NE, SE Portland. www.impactnw.org

Latino Network | Early literacy services with Latino families focusing on pre-kindergarten children and their parents; E Portland. www.latnet.org

Morrison Child & Family Services | Mental health consultation, parenting education, child outpatient services with 10 childcare sites & preschools; citywide. www.morrisonkids.org

Morrison Child & Family Services Listos Para Aprender | Home-visit child development services and case management with Latino families; citywide. www.morrisonkids.org

Mt. Hood Community College Head Start | Expanded Head Start classroom in Gateway Children's Center; SE Portland. www.mhcc.edu

Mt. Hood Community College Childcare Resource & Referral | Quality enhancement for childcare providers and childcare subsidies for low-income families; citywide. www.ccr-mc.org

Multnomah County Library Foundation | Raising a Reader early reading program for preschoolers and their families; citywide. www.libraryfoundation.org

Neighborhood House | Early Oregon pre-kindergarten with children in care of home-based childcare providers; N, NW, SW Portland. www.nhweb.org

Peninsula Children's Center | Childcare subsidies for children from low-income families; N, NE Portland. www.penchild.org

Portland Community College Child Development Center | Expanded childcare and parent education classes at Sylvania campus; SW Portland. www.pcc.edu/resources/child-care/development-center/index.html

Portland Public Schools Head Start | Two Head Start classrooms at Kelly Center and one summer Head Start session; SE Portland. www.headstart.pps.k12.or.us

AFTER-SCHOOL PROGRAMS

Boys & Girls Clubs of Portland Metropolitan Area | After-school program and mental health counseling at Club sites; N, NE, outer SE Portland. www.bgcpportland.org/

Camp Fire USA Portland Metro Council | After-school academic, recreation and service learning program at three elementary schools; outer SE Portland. www.portlandcampfire.org

Chess for Success | After-school chess program in five elementary schools for children in grades 4-8; outer SE Portland. www.chessforsuccess.org

The Children's Course | After-school golf program to build athletic skills and help youth develop other life skills; N Portland. www.thefirstteechildrenscourse.org

Community Cycling Center | After-school Bike Safety Club at six elementary schools for children in grades 4-5; N, SE Portland. www.communitycyclingcenter.org

Ethos Music Center | After-school music education program at five elementary schools for children in grades 4-5; N, NE Portland. <http://ethos.org/>

Friendly House | After-school program for homeless children; citywide. www.friendlyhouseinc.org

Girls Inc. of Northwest Oregon | After-school program for girls, focused on youth development, at six elementary and four middle schools; citywide. www.girlsinc.org

Immigrant & Refugee Community Organization | After-school program, family services and parent education for immigrants and refugees at two elementary schools and one middle school; SE Portland. www.irco.org

Impact Northwest | SUN Community School program for children at Whitman Elementary School and Marshall High School; SE Portland. www.impactnw.org

Impact Northwest | Urban Opportunities program to prepare at-risk youth with accredited workforce employment training and job readiness skills; N, NE, SE Portland. www.impactnw.org

Metropolitan Family Services | SUN Community School program at Glenfair Elementary School and Harold Oliver Primary; outer NE Portland. www.metfamily.org

NAYA Family Center | Cultural and sports after-school program for Native American/Native Alaskan children in grades 4-8; citywide. www.nayapdx.org

Neighborhood House | SUN Community School program at Jackson Middle School; SW Portland. www.nhweb.org

Northwest Family Services | After-school program for Latino youth at seven schools; N, SE Portland. www.nwfs.org

Open Meadow | After-school and summer program offering tutoring, advocacy and leadership training at Madison, Marshall and Roosevelt high schools for 9th and 10th graders. www.openmeadow.org

Oregon Health Career Center | After-school science program at 40 SUN Community Schools in Portland; citywide. www.ohcc.org/

Saturday Academy | After-school and weekend enrichment programs at 12 schools in grades 1-8; N, NE, SE Portland. www.saturdayacademy.org

Self Enhancement, Inc. | After-school academic and enrichment services for children in grades 4-8, focused on African-American youth; N, NE Portland. www.selfenhancement.org

Tears of Joy Theatre | Arts-based after-school program at five K-8 schools; N, NE Portland. www.tojt.com

MENTORING PROGRAMS

Big Brothers Big Sisters of Columbia Northwest | Community-based, one-on-one mentoring program; N, NE, outer SE Portland. www.bbbsnorthwest.org

Big Brothers Big Sisters of Columbia Northwest | Latino Mentoring Initiative including school-based and community-based services; N, NE Portland. www.bbbsnorthwest.org

Boys & Girls Aid | Community-based, one-on-one mentoring; citywide. www.boysandgirlsaid.org

Friends of the Children | Long-term, community-based, one-on-one mentoring program for children grades K-12; Addition of tutoring program and Teen Space program to supplement long-term mentoring program; citywide. www.friendsofthechildren.org/portland

Immigrant and Refugee Community Organization | Mentoring program for African immigrant youth in middle and high school; NE, SE Portland. www.irco.org

Impact Northwest | School and community-based, one-on-one mentoring program at eight elementary schools; NE, SE Portland. www.impactnw.org

Lutheran Community Services NW | Community-based mentoring program focused on immigrant youth from Burma, East Africa and Eastern Europe; citywide. www.lcsnw.org/portland/index.html

Metropolitan Family Services | One-on-one mentoring program serving seven elementary schools, retirees serve as mentors; N, NE, SE Portland. www.metfamily.org/

Portland Opportunities Industrialization Center | After-school school-based mentoring for students attending Rosemary Anderson High School; N Portland. www.portlandoic.org

Portland State University Chicano/Latino Studies | Mentoring program pairing Latino high schoolers with Latino middle schoolers; N, NE, SE Portland.

SMART | Literacy mentoring program for children grades K-3 at 24 elementary schools; N, NE, SE Portland. www.getsmartoregon.org

Trillium Family Services | Family-to-child mentoring program for elementary school children; N, NE, SE Portland. www.trilliumfamily.org

CHILD ABUSE PREVENTION AND INTERVENTION PROGRAMS

CARES Northwest | Assessment services for children with urgent child abuse concerns; citywide. www.caresnw.org

Catholic Charities | Therapeutic intervention services for Latino children of victims of domestic violence; citywide. www.catholiccharitiesoregon.org

Children's Justice Alliance | Long-term and intensive family preservation services; citywide. www.childrensjusticealliance.org

Children's Relief Nursery | Classroom-based therapeutic care for children ages 0-3, home visits, parenting education and respite care; citywide. www.crn4kids.org

Janus Youth Programs | Substance abuse treatment and mental health services for homeless teens; citywide. www.jyp.org/

Janus Youth Programs | Case management, parent education and support services for teen parents and their children; citywide. www.jyp.org

LifeWorks NW | Multi-systemic therapy for children at risk for child abuse and neglect; N, NE, SE Portland. www.lifeworksnw.org

LifeWorks NW | Case management for families at risk for child abuse; citywide. www.lifeworksnw.org

Listen to Kids | Therapeutic intervention services for children of victims of domestic violence; citywide. www.listentokids.org

Lutheran Community Services NW | Culturally specific family support program for immigrants and refugees from Africa and Eastern Europe; citywide. www.lcsnw.org/portland/index.html

Salvation Army/West Women's and Children's Shelter | Therapeutic intervention services for children of victims of domestic violence; citywide. http://www1.usw.salvationarmy.org/usw/www_usw_cascade.nsf

Volunteers of America | Services for children, youth and parents at the Gateway Center for Domestic Violence Services in East Portland. www.voaoor.org

Volunteers of America | Classroom-based therapeutic care for children ages 0-5, home visits, parenting education and respite care; citywide. www.voaoor.org

FOSTER CARE PROGRAMS

Big Brothers Big Sisters of Columbia Northwest | Mentoring program for children in the foster care system; citywide. www.bbbsnorthwest.org

Boys & Girls Aid | Child-specific recruitment services to secure permanent adoptive homes for children in foster care; citywide. www.boysandgirlsaid.org

Children's Relief Nursery | Comprehensive relief nursery services to support children in foster care and their biological, kinship/relative or foster care parents; N, NE Portland. www.crn4kids.org

Impact Northwest | Program to provide parent-child development services to children in temporary foster care; NE, SE Portland. www.impactnw.org

Janus Youth Programs | Insights/ECHO Case management and parent education for teen mothers and their children, where either the mother and/or the child is in foster care; citywide. www.jyp.org

Juvenile Rights Project | Legal representation, advocacy and case management for primarily children in foster care; citywide. www.jrplaw.org

Legacy Emanuel Children's Hospital | Program to provide medical services for foster care children and youth; citywide. www.legacyhealth.org

NAYA Family Center | Case management and enrichment services for Native American youth and support for foster parents; citywide. www.nayapdx.org

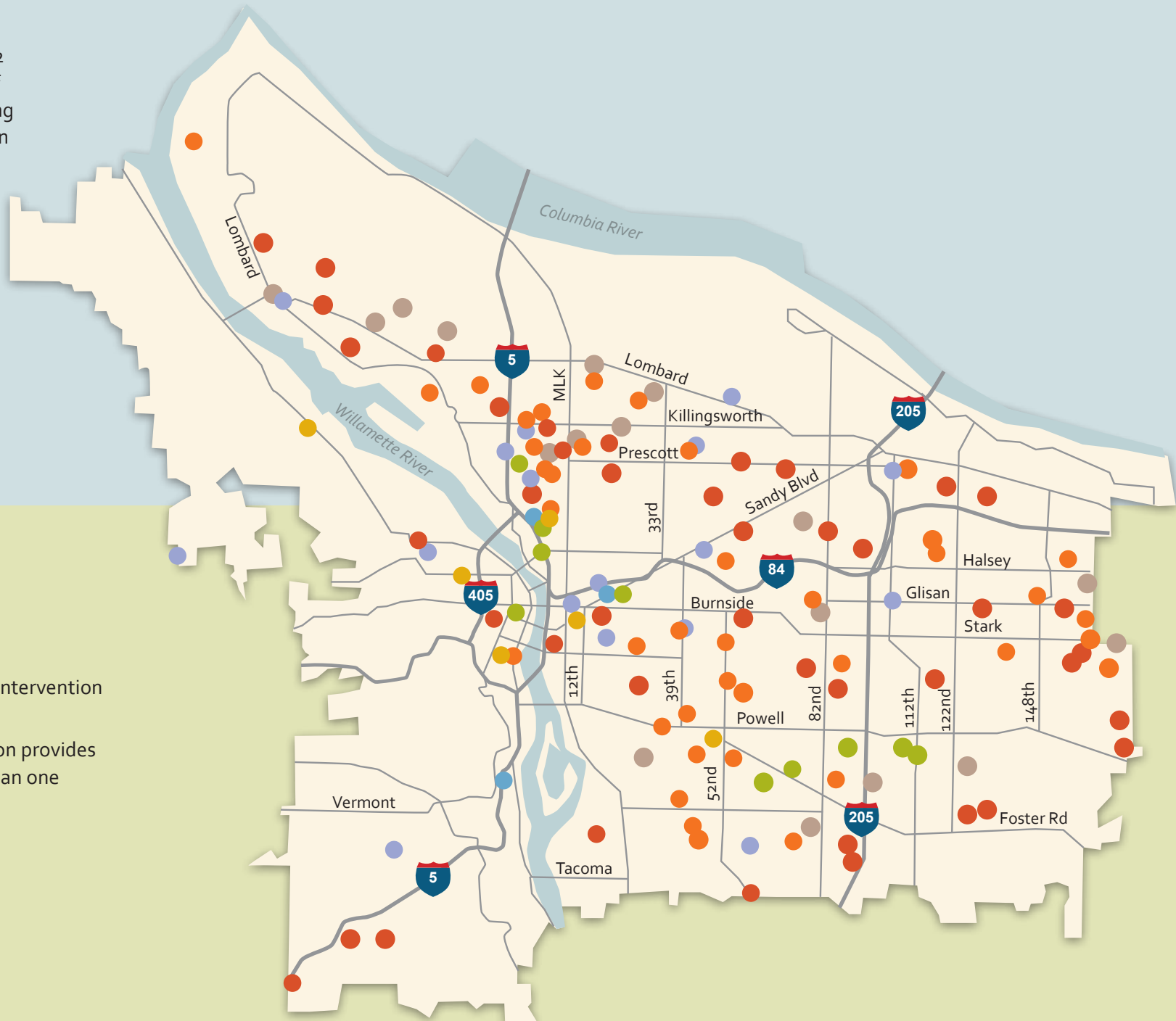
Self Enhancement, Inc. | Comprehensive in-school and out-of-school services for African American students; N, NE Portland. www.selfenhancement.org

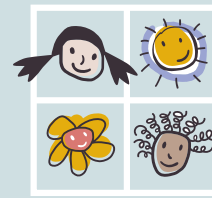
THE REACH OF THE PORTLAND CHILDREN'S LEVY

Dots on the map represent Levy-funded organization administrative offices and the 62 schools at which a majority of our after-school and mentoring programs occur. Not shown on the map are:

- 120-plus childcare providers at community preschools and family- and center-based sites
- 36 Head Start and Early Head Start sites
- Hundreds of children served in their homes by home-based services

- Early Childhood
- After School
- Mentoring
- After School/Mentoring
- Child Abuse Prevention/Intervention
- Foster Care
- Multiservice (Organization provides programming in more than one funding area)

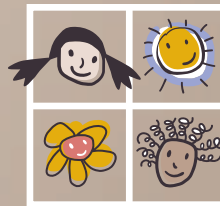




Investing in our future
portland
children's
levy

We believe every child has the right to a bright future and the opportunity to succeed. We support early childhood development programs and parent education; after-school and mentoring programs; child abuse prevention and intervention programs; and programs to help children in foster care succeed.






portland children's levy

Investing in our future

319 SW Washington, Suite 415
Portland, OR 97204
T 503-823-2936 | F 503-823-2979
www.portlandchildrenslevy.org

 Follow us on Facebook