

# 2016 Progress Report



portland  
children's  
levy

**START  
HERE**



We provide opportunities that support children from their very first step to high school and beyond.

Follow the path to find out more.

## EARLY CHILDHOOD PROGRAMS

*Helping children prepare for kindergarten*

Early childhood programs lead to better reasoning and language skills as well as healthy social and emotional development.



LEARNING

I can't wait for kindergarten!

I like snack time with my new friends . . . and learning my ABCs.

We read to our son every night.

SHARING



GAINING NEW SKILLS



A weekly supply of milk, bread, veggies and staple items helps stretch a family's food budget.

My family has a healthy dinner, we sleep better, and my kids wake up ready for a new day.



ENERGY FOR LEARNING

FRESH FRUITS AND VEGGIES

The vitamins and minerals in fresh fruit help brains to develop.



HEALTHY FOOD FOR MY KIDS

## HUNGER RELIEF PROGRAMS

*Getting healthy and nutritious food to children and families*

Children who have regular and nutritious meals can concentrate on learning. They experience healthy growth and are less susceptible to illness and behavioral problems.

## AFTER-SCHOOL PROGRAMS

*A safe place for students to learn and have fun*

Students gain self-esteem, confidence and leadership skills in a safe haven with caring adults who provide academic support and fun activities.

### MAKING FRIENDS

It's fun to make new friends, go on field trips and talk about our dreams for college.



### ACADEMIC SUPPORT

My mom and dad aren't home after school, so this is a safe place for me to get help with my homework.

We work together on science, math and art projects.

### GETTING INSPIRED





I am loved.



I learned how to work with my son when he gets frustrated; it makes me a better mom.



I am safe.



**CHILD ABUSE PREVENTION & INTERVENTION PROGRAMS**  
*Empowering the development of strong families*  
Children thrive when parents gain parenting skills and are supported in their role of parent.

## MENTORING PROGRAMS

*One-on-one help to support academic and social skills*

Positive, caring, consistent adult role models support children's confidence and help them realize their academic and life goals.



HEADING TO COLLEGE

Meeting with my mentor once a week really helps me stay focused on my goals.

LEARN BY MODELING

My mentor is my role model; she's really taught me a lot.



We learn how to build trust and fellowship with our classmates.

BUILDING SELF ESTEEM



My mom is happy and raising me in a loving and nurturing home.

DEVELOPING LIFE SKILLS

THANK YOU PORTLAND FOR SUPPORTING OUR CITY'S CHILDREN ON THEIR JOURNEY



I learned how to focus and direct my energy to best support my son.

CARING ADULTS



I like spending time with my family and friends.



ADVOCACY

## FOSTER CARE PROGRAMS

*Supporting the well-being and development of the city's most vulnerable children*

Programs work with children and youth to strengthen academic and life skills and assure the presence of caring adults.



Dear Portlanders:

As residents of a city landing on top ten lists ranging from food to livability, I also like to think that we rank high in how we treat our most precious resource: our children.

Back in 2002 Portland was one of only a handful of cities to create dedicated funding to support crucial services that lead to better outcomes for kids and families.

The Portland Children's Levy does just that by helping pave a path to healthier lives and brighter futures. We invest over \$14 million a year in 69 quality and proven programs that enhance and improve the lives of kids from birth through college and beyond.

**Early Childhood:** We help ensure children arrive at kindergarten prepared to do well and that their parents are equipped to navigate the school system to maximize that success, especially recent immigrants and refugees.

**After School:** We promote academic achievement in core subject areas, along with fun and creative activities that engage students and keep them safe once the dismissal bell rings.

**Mentoring:** We provide nurturing and supportive adult and peer role models that change children's lives through higher self-esteem and confidence, and steer a student toward college and job skills training.

**Child Abuse Prevention & Intervention:** We assist vulnerable families gain coping strategies, parenting assistance and social services support to handle the stress that comes with life's challenges.

**Foster Care:** We help make possible a world where children in foster care graduate from high school at a rate equal to that of their peers and go on to succeed at college or high-paying jobs.

**Hunger Relief:** We invest in programs so that all children get the basic necessities they deserve like daily nutritious and healthy meals to help feed their brains and their bodies.

The Portland Children's Levy continues to create new and hope-filled journeys for our children and families. Your partnership makes their happy endings possible and builds a stronger city for our next generation.

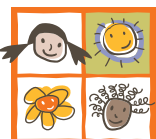
Sincerely,

Dan Saltzman

Portland City Commissioner

Chair, Portland Children's Levy Allocation Committee

[dan@portlandoregon.gov](mailto:dan@portlandoregon.gov)



portland  
children's  
levy

Portland Children's Levy  
319 SW Washington, Suite 415  
Portland, OR 97204 | 503.823.2936

[portlandchildrenslevy.org](http://portlandchildrenslevy.org)

Follow us on Facebook and @PDXforkids



# MAKING CHILDREN A PRIORITY



**Prepare children for school.**

**Support children's success inside and outside of school.**

**Reduce racial and ethnic disparities in children's well-being and school success.**

The Portland Children's Levy grew out of a need to support services that help vulnerable children avoid negative outcomes such as:

- Poor health, poor academic performance and failure to complete high school.
- Juvenile delinquency, substance abuse and teen pregnancy.
- Violent crime, including child abuse and neglect.

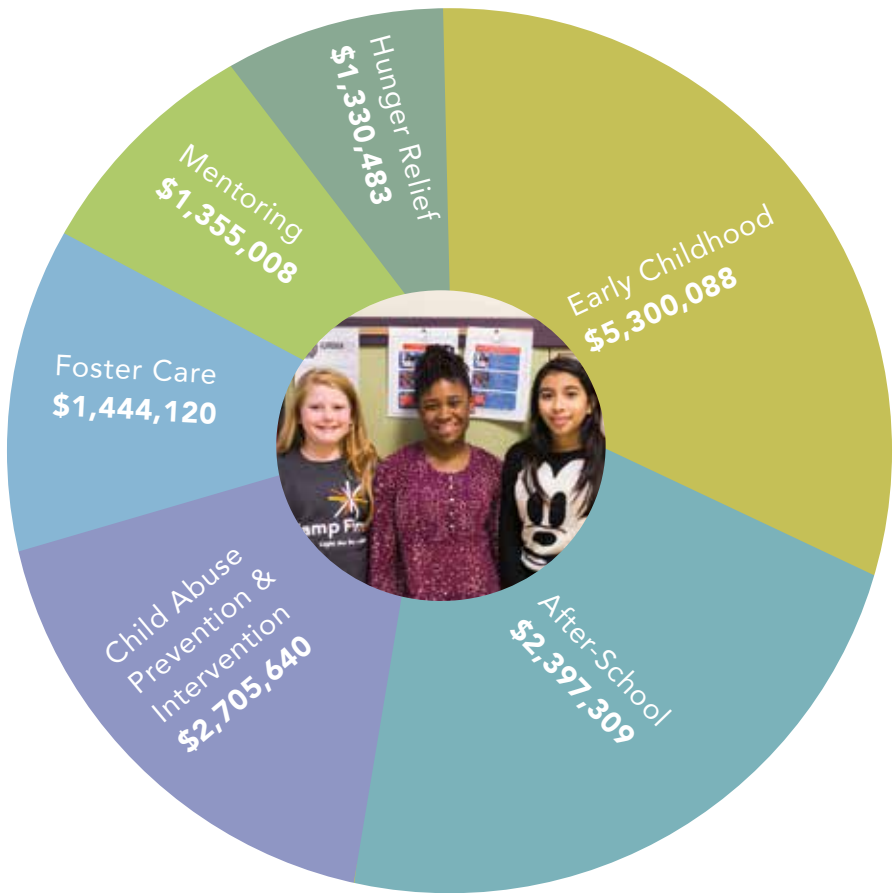
Since 2002, PCL programs strengthen the entire Portland community by helping thousands of children from birth through 24 reach their potential.

PCL-funded programs also empower parents and caregivers to become more invested and involved in helping their children succeed in the classroom and in life.

**TOWARD A BRIGHT FUTURE**



# 2016 PROGRAM INVESTMENTS



## ACCOUNTABILITY

The Portland Children's Levy is overseen by a five-member Allocation Committee that meets publicly to make funding decisions. It is composed of a Portland City Commissioner, a Multnomah County Commissioner and three citizen members appointed by the City, County and the Portland Business Alliance. The Levy has annual audits by an independent firm with results published on our website at [www.portlandchildrenslevy.org](http://www.portlandchildrenslevy.org). An administrative cap of 5 percent means that 95 cents of every dollar goes to proven programs. City homeowners support the Levy through a property tax of about \$60 a year for a home with an assessed value of \$150,000.

## CURRENT MEMBERS

### **Dan Saltzman**

Portland City Commissioner  
Allocation Committee Chair

### **Deborah Kafoury**

Multnomah County  
Commission Chair

### **Julie S. Young**

Youth advocate and  
community volunteer

### **Serena Stoudamire-Wesley**

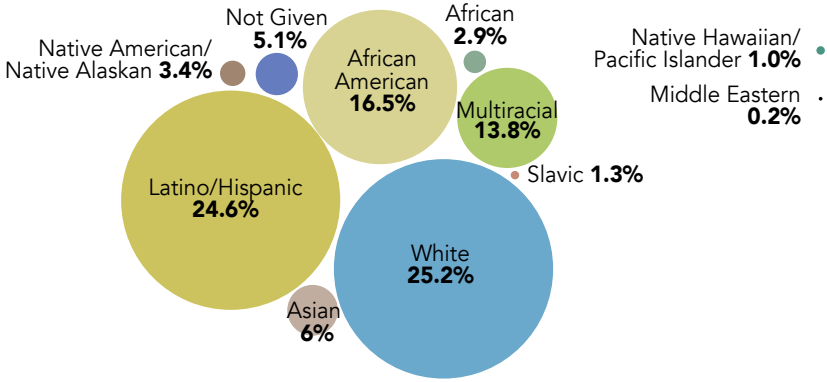
Early childhood advocate and  
community volunteer

### **Mitch Hornecker**

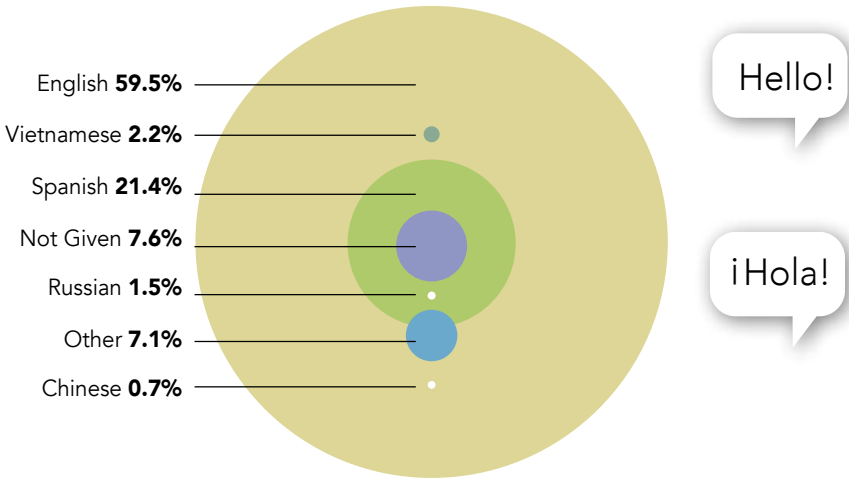
Executive VP/  
Chief Legal Officer  
Howard S. Wright/Balfour Beatty

# WHO WE SERVE AND WHERE\*

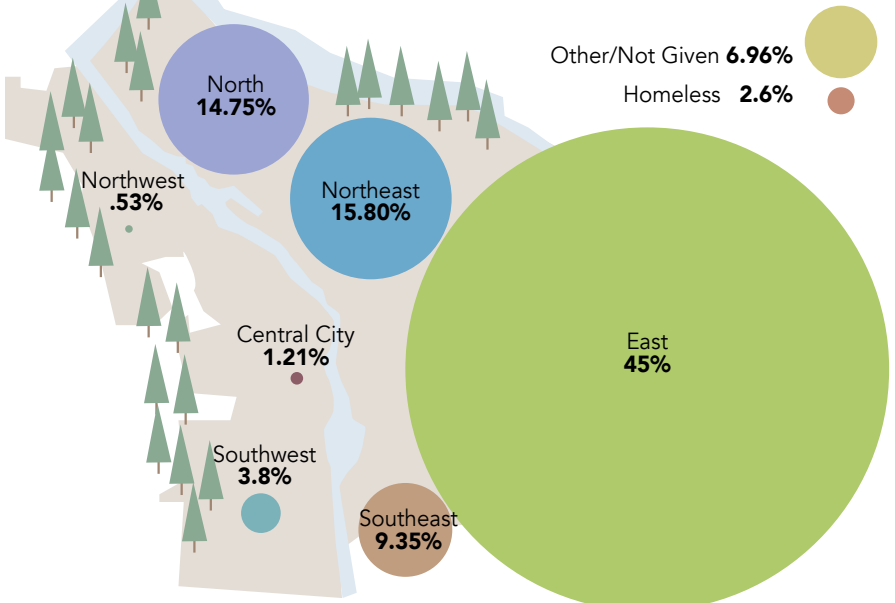
## RACE/ETHNICITY



## PRIMARY LANGUAGE SPOKEN AT HOME



## PORTLAND NEIGHBORHOOD



\*These charts represent the majority of Levy-funded programs which annually serve over 8,000 children. They do not include Hunger Relief services that annually provide food to over 11,000 children, 79 percent who were children of color; 52 percent who spoke a first language other than English; and 81 percent who resided in East Portland.

# INVESTMENTS

## EARLY CHILDHOOD PROGRAMS

### **Albina Head Start**

➤ Early Head Start classrooms and home-based Early Head Start services; N, NE, SE Portland.

### **Albina Head Start**

➤ Head Start preschool classrooms; N, NE, SE Portland.

### **Friendly House**

**Preschool** ➤ Preschool for children from low-income families; NW Portland.

**Hacienda CDC** ➤ Home-visit child development services with families in Hacienda locations; N, NE Portland.

### **Immigrant & Refugee Community Organization**

➤ Home-visit child development services with immigrants & refugees; citywide.

### **Impact Northwest**

➤ Home-visit child development services and preschool playgroups; NE, SE Portland.

### **Latino Network**

➤ Weekly preschool groups for children and parents focused on Latino families; N, NE, E Portland.

### **Metropolitan Family Service**

➤ Weekly preschool groups for children and parents focused on Latino families; E Portland.

### **Morrison Child & Family Services**

➤ Mental health consultation and parenting education at 10 childcare sites & preschools; citywide.

### **Morrison Child & Family Services Listos Para Aprender**

➤ Home-visit child development services with Latino families; citywide.

### **Mt. Hood Community College Head Start**

➤ Head Start preschool classrooms; E Portland.

### **Mt. Hood Community College Head Start**

➤ Home-based Early Head Start services; E Portland.

### **Mt. Hood Community College Childcare Initiative**

➤ Childcare affordability support for low-income working families; citywide.

### **NAYA Family Center**

➤ Home-visit child-development services for Native American families; citywide.

### **Neighborhood House**

**Early Oregon Pre-Kindergarten** ➤ Home-based services modeled after Early Head Start; SW Portland.

### **Peninsula Children's Center**

➤ Preschool for children from low-income families; N, NE Portland.

### **Portland Public Schools Head Start**

➤ Four extended-day Head Start classrooms; SE Portland.

## AFTER-SCHOOL PROGRAMS

### **Boys & Girls Clubs of Portland Metropolitan Area**

➤ SUN Community School program at Margaret Scott Elementary School; NE Portland.

### **Ethos Music Center**

➤ After-school music education program at 12 schools for students in grades 2-8; N, NE Portland.

### **Girls Inc. of Northwest Oregon**

➤ After-school program for girls focused on youth development at nine schools for students ages 8-14; citywide.

### **Hacienda CDC**

➤ Homework support and enrichment programming for children residing in Hacienda housing sites; N, NE Portland.

### **Human Solutions**

➤ After-school program including intensive academic support and tutoring for children residing in four public housing sites; E Portland.

### **Immigrant & Refugee Community Organization**

➤ After-school tutoring, academic support and parent engagement for immigrants /refugees in grades 5-9; E Portland.

### **Immigrant & Refugee Community Organization**

➤ SUN community school program at Parkrose Middle School and Ventura Park Elementary School; NE, SE Portland.

### **Impact Northwest**

➤ Urban Opportunities program prepares youth for employment with training, job readiness skills and internships; N, NE Portland.

### **Impact Northwest**

➤ After-school science program at SUN Community Schools in Portland; citywide.

### **Metropolitan Family Service**

➤ SUN Community School program at Cherry Park and West Powellhurst elementary schools; outer SE Portland.

### **NAYA Family Center**

➤ Homework support, cultural arts and sports after school and summer program for students ages 5-18; citywide.

# INVESTMENTS

## **Neighborhood House**

➤ Intensive academic support for students attending Hayhurst Elementary School, including children living at Stephens Creek Crossing; SW Portland.

**Open School** ➤ After-school program offering tutoring, academic support, advocacy and dropout prevention at Madison, Franklin and Roosevelt high schools.

**Playworks** ➤ Junior Coach Leadership after-school program offered at nine schools includes training and practice in conflict resolution, leadership, teamwork and physical activity; citywide.

**Saturday Academy** ➤ After-school enrichment programs at 12 schools in grades 1-8; N, NE, SE Portland.

**Self Enhancement, Inc.** ➤ After-school academic support and enrichment services for children in grades 6-8, focused on African American youth; N, NE Portland.

## **MENTORING PROGRAMS**

**Camp Fire USA Portland Metro Council** ➤ School-based mentoring for students at George and Lane middle schools; N, SE Portland.

**College Possible** ➤ Mentoring focused on college application and enrollment; SE Portland.

**Friends of the Children** ➤ Long-term, community-based, mentoring program for children grades K-12; citywide.

## **Immigrant and Refugee Community Organization**

➤ Community-based mentoring program for immigrant youth; NE, SE Portland.

## **NAYA Family Center**

➤ Mentoring for Native American youth transitioning from 8th grade into high school and emphasis on high school graduation and post-secondary goals; citywide.

**Portland OIC** ➤ School-based mentoring for students attending Rosemary Anderson High School; N Portland.

## **CHILD ABUSE PREVENTION AND INTERVENTION PROGRAMS**

### **Bradley Angle House**

➤ In-home and group parenting education and support for families with children ages 0-12 who have experienced domestic violence; citywide.

### **Legacy Emanuel Hospital and Health Center/ CARES Northwest**

➤ Assessment and therapeutic services for children ages 0-18 with child abuse concerns; citywide.

### **Catholic Charities/El Programa Hispano**

➤ Individual and group parenting education and support for Latino families, with children ages 0-12, who have experienced domestic violence. Therapeutic services for children; citywide.

## **LifeWorks NW, Children's Relief Nursery**

➤ Classroom-based therapeutic care for children ages 0-5, home visits, parenting education and respite care; N, NE, E Portland.

## **Immigrant & Refugee Community Organization**

➤ In-home parenting education and support for low-income immigrant/refugee families, with children ages 0-18, who are at risk for abuse or neglect; citywide.

## **Impact Northwest**

➤ Individual and group parenting education and support for families, with children ages 0-12, who have experienced domestic violence; citywide.

## **Janus Youth Programs/ Insights**

➤ In-home parenting education and support for teen parents and their children; citywide.

**LifeWorks NW** ➤ In-home parenting support for families with children ages 0-18 who are at risk for child abuse and neglect; citywide.

## **Metropolitan Family Service**

➤ In-home parent education and support for families with children ages 0-11 who are at risk for abuse or neglect and live in the David Douglas School District; E Portland.

## **NAYA Family Center**

➤ Culturally specific, in-home parenting education and support services for Native American/Native Alaskan families with children ages 0-5 who are at risk for abuse or neglect; citywide.

# INVESTMENTS

## **Pathfinders of Oregon**

➤ Parenting classes, case management and home visiting services for families involved in the criminal justice system or child welfare system; citywide.

**Portland OIC** ➤ In-home and classroom parenting education and support for African American parents attending Rosemary Anderson High School or POIC; citywide.

## **Salvation Army/West Women's and Children's Shelter**

➤ Individual and group parenting education and support for families, with children ages 0-18, who have experienced domestic violence; citywide.

**Self Enhancement, Inc.** ➤ In-home and classroom parenting education and support for African American families enrolled in SEI's school program; N, NE Portland.

**Volunteers of America** ➤ Drop-in child care for children, ages 6 weeks-10 years, while parents access services through the Gateway Center for Domestic Violence Services; citywide.

**Volunteers of America** ➤ Classroom-based therapeutic care for children ages 0-5, home visits, parenting education and respite care; citywide.

**Volunteers of America** ➤ Classroom-based therapeutic care for African American children, ages 0-5. Culturally specific home visiting, parenting classes, mentoring, and respite care; citywide.

## **FOSTER CARE PROGRAMS**

### **Boys & Girls Aid**

➤ Supportive services focused on preparing youth and families for legal permanency. Serves youth in foster care, ages 14 and older; citywide.

## **Friends of the Children**

➤ Intensive, year-round mentoring services for children in foster care. Includes home visits with foster parents. Recruitment into services begins for children age 5; citywide.

### **Impact Northwest**

➤ Home visiting, parenting support and case management for children in foster care, ages 0-8 years old, and their birth and foster parents. Services focus on reunification; citywide.

### **Janus Youth Programs/Insights**

➤ Case management and in-home parent education for teen mothers and their children, where either the mother and/or the child is in foster care; citywide.

### **NAYA Family Center**

➤ Advocacy and enrichment services for Native American/Native Alaskan youth, ages 0-24, who are in foster care or have aged out of foster care; citywide.

### **New Avenues for Youth**

➤ College preparation and support services for youth, ages 17-24, who are in foster care or aged out of foster care. Leadership development, dorm housing, case management and leadership coaching during their freshman year of college; citywide.

### **Self Enhancement, Inc.**

➤ Advocacy/case management, enrichment activities & academic support for African American youth, ages 7-19, who are in foster care; N, NE Portland.

## **Youth Rights & Justice: Attorneys at Law**

➤ Educational advocacy, for children in foster care ages 4-21, focus on ensuring children receive appropriate instructions and other supports to address academic, emotional, and behavioral needs of each child; citywide.

## **HUNGER RELIEF PROGRAMS**

### **Immigrant & Refugees Community Organization**

➤ Increase access to emergency food at four schools; E Portland.

### **Janus Youth Program**

➤ Providing access for families to buy or grow healthy, culturally appropriate food; N Portland.

### **Meals on Wheels**

➤ Home-delivered meals to nutritionally at-risk families; citywide.

### **Metropolitan Family Service**

➤ Increase access to emergency food at 10 schools; E Portland.

### **Oregon Food Bank**

➤ Expansion/creation of 16 school food pantry sites, produce distribution at three summer feeding sites, classes in nutrition, cooking, gardening and food budgeting; E Portland.